



[Go to Product page](#)

Datasheet for ABIN1355095

GIMAP4 Protein (AA 125-224) (GST tag)

1 Image

Overview

Quantity:	10 µg
Target:	GIMAP4
Protein Characteristics:	AA 125-224
Origin:	Human
Source:	Wheat germ
Protein Type:	Recombinant
Purification tag / Conjugate:	This GIMAP4 protein is labelled with GST tag.
Application:	ELISA, Western Blotting (WB), Antibody Array (AA), Affinity Purification (AP)

Product Details

Purpose:	GIMAP4 (Human) Recombinant Protein (Q01)
Sequence:	RYTEEEHKAT EKILKMFGER ARSFMILIFT RKDDLGDNTL HDYLREAPED IQDLMDIFGD RYCALNNKAT GAEQEAQRAQ LLGLIQRVVR ENKEGCVYTR
Characteristics:	Human GIMAP4 partial ORF (NP_060796, 125 a.a. - 224 a.a.) recombinant protein with GST-tag at N-terminal.
Purification:	in vitro wheat germ expression system

Target Details

Target:	GIMAP4
Alternative Name:	GIMAP4 (GIMAP4 Products)

Target Details

Background:	Full Gene Name: GTPase, IMAP family member 4 Synonyms: FLJ111110,HIMAP4,IAN1,IMAP4,MSTP062,hIAN1
Gene ID:	55303
NCBI Accession:	NM_018326

Application Details

Application Notes:	Optimal working dilution should be determined by the investigator.
Comment:	Preparation method: in vitro, wheat germ expression system Product Quality tested by: 12.5% SDS-PAGE Stained with Coomassie Blue.
Restrictions:	For Research Use only

Handling

Buffer:	50 mM Tris-HCl, 10 mM reduced Glutathione, pH =8.0 in the elution buffer.
Handling Advice:	Aliquot to avoid repeated freezing and thawing.
Storage:	-80 °C
Storage Comment:	Best use within three months from the date of receipt of this protein.

Images

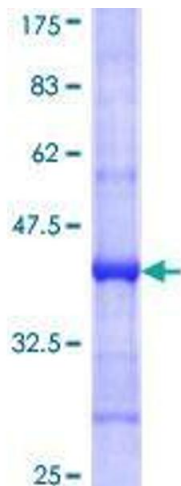


Image 1.