



[Go to Product page](#)

Datasheet for ABIN1355111

GINS3 Protein (AA 1-216) (GST tag)

1 Image

Overview

Quantity:	10 µg
Target:	GINS3
Protein Characteristics:	AA 1-216
Origin:	Human
Source:	Wheat germ
Protein Type:	Recombinant
Purification tag / Conjugate:	This GINS3 protein is labelled with GST tag.
Application:	ELISA, Western Blotting (WB), Antibody Array (AA), Affinity Purification (AP)

Product Details

Purpose:	FLJ13912 (Human) Recombinant Protein (P01)
Sequence:	MSEAYFRVES GALGPEENFL SLDDILMSHE KLPVRTETAM PRLGAFFLER SAGAETDNAV PQGSKLELPL WLAKGLFDNK RRILSVELPK IYQEGWRTVF SADPNVVDLH KMGPHFYGF SLLHFDSPE NADISQSLLQ TFIGRFRRIM DSSQNAYSED TSALVARLDE MERGLFQTGQ KGLNDFQCWE KGQASQITAS NLVQNYKKRK FTDMED
Characteristics:	Human FLJ13912 full-length ORF (AAH05879, 1 a.a. - 216 a.a.) recombinant protein with GST-tag at N-terminal.
Purification:	in vitro wheat germ expression system

Target Details

Target:	GINS3
---------	-------

Target Details

Alternative Name:	GINS3 (GINS3 Products)
Background:	Full Gene Name: GINS complex subunit 3 (Psf3 homolog) Synonyms: FLJ13912,PSF3
Gene ID:	64785

Application Details

Application Notes:	Optimal working dilution should be determined by the investigator.
Comment:	Preparation method: in vitro, wheat germ expression system Product Quality tested by: 12.5% SDS-PAGE Stained with Coomassie Blue.
Restrictions:	For Research Use only

Handling

Buffer:	50 mM Tris-HCl, 10 mM reduced Glutathione, pH =8.0 in the elution buffer.
Handling Advice:	Aliquot to avoid repeated freezing and thawing.
Storage:	-80 °C
Storage Comment:	Best use within three months from the date of receipt of this protein.

Images

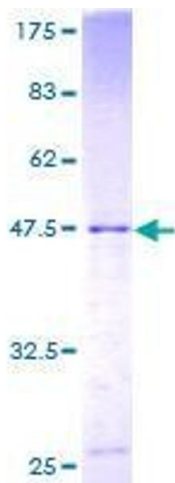


Image 1.