



[Go to Product page](#)

Datasheet for ABIN1355117

GIPC1 Protein (AA 61-158) (GST tag)

1 Image

Overview

Quantity:	10 µg
Target:	GIPC1
Protein Characteristics:	AA 61-158
Origin:	Human
Source:	Wheat germ
Protein Type:	Recombinant
Purification tag / Conjugate:	This GIPC1 protein is labelled with GST tag.
Application:	ELISA, Western Blotting (WB), Antibody Array (AA), Affinity Purification (AP)

Product Details

Purpose:	GIPC1 (Human) Recombinant Protein (Q01)
Sequence:	HTQLAHGSPT GRIEGFTNVK ELYGKIAEAF RLPTAEVMFC TLNTHKVDMD KLLGGQIGLE DFIFAHVKGQ RKEVEVFKSE DALGLTITDN GAGYAFIK
Characteristics:	Human GIPC1 partial ORF (NP_005707, 61 a.a. - 158 a.a.) recombinant protein with GST-tag at N-terminal.
Purification:	in vitro wheat germ expression system

Target Details

Target:	GIPC1
Alternative Name:	GIPC1 (GIPC1 Products)

Target Details

Background: Full Gene Name: GIPC PDZ domain containing family, member 1
Synonyms: C19orf3,GIPC,GLUT1CBP,Hs.6454,IIP-1,MGC15889,MGC3774,NIP,RGS19IP1,SEMCAP,SYNECTIIN,SYNECTIN,TIP-2

Gene ID: 10755

NCBI Accession: [NM_005716](#)

Pathways: [Dicarboxylic Acid Transport](#)

Application Details

Application Notes: Optimal working dilution should be determined by the investigator.

Comment: Preparation method: in vitro, wheat germ expression system
Product Quality tested by: 12.5% SDS-PAGE Stained with Coomassie Blue.

Restrictions: For Research Use only

Handling

Buffer: 50 mM Tris-HCl, 10 mM reduced Glutathione, pH =8.0 in the elution buffer.

Handling Advice: Aliquot to avoid repeated freezing and thawing.

Storage: -80 °C

Storage Comment: Best use within three months from the date of receipt of this protein.

Images

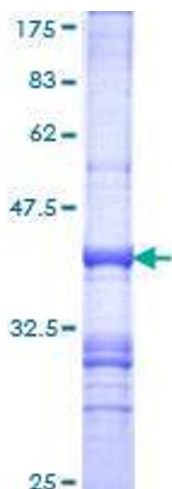


Image 1.