



[Go to Product page](#)

Datasheet for ABIN1355119

GIPC2 Protein (AA 1-315) (GST tag)

1 Image

Overview

Quantity:	10 µg
Target:	GIPC2
Protein Characteristics:	AA 1-315
Origin:	Human
Source:	Wheat germ
Protein Type:	Recombinant
Purification tag / Conjugate:	This GIPC2 protein is labelled with GST tag.
Application:	ELISA, Western Blotting (WB), Antibody Array (AA), Affinity Purification (AP)

Product Details

Purpose:	GIPC2 (Human) Recombinant Protein (P01)
Sequence:	MPLKLRGKKK AKSKETAGLV EGEPTGAGGG SLSASRAPAR RLVFHAQLAH GSATGRVEGF SSIQELYAQI AGAFEISPSE ILYCTLNTPK IDMERLLGGQ LGLEDIFIFAH VKGIEKEVNV YKSEDSLGLT ITDNGVGYAF IKRIKDGGVI DSVKTCVGD HIESINGENI VGWRHYDVAK KLKELKKEEL FTMKLIPEPK AFEIEPRSKA GKSSGEKIGC GRATLRLRSK GPATVEEMPS ETKAKAIEKI DDVLELYMGI RDIDLATTMF EAGKDKVNPD EFAVALDETL GDFAFPDEFV FDVWGVIGDA KRRGL
Characteristics:	Human GIPC2 full-length ORF (AAH36075.1, 1 a.a. - 315 a.a.) recombinant protein with GST-tag at N-terminal.
Purification:	in vitro wheat germ expression system

Target Details

Target:	GIPC2
Alternative Name:	GIPC2 (GIPC2 Products)
Background:	Full Gene Name: GIPC PDZ domain containing family, member 2 Synonyms: FLJ20075,SEMCAP-2,SEMCAP2
Gene ID:	54810

Application Details

Application Notes:	Optimal working dilution should be determined by the investigator.
Comment:	Preparation method: in vitro, wheat germ expression system Product Quality tested by: 12.5% SDS-PAGE Stained with Coomassie Blue.
Restrictions:	For Research Use only

Handling

Buffer:	50 mM Tris-HCl, 10 mM reduced Glutathione, pH =8.0 in the elution buffer.
Handling Advice:	Aliquot to avoid repeated freezing and thawing.
Storage:	-80 °C
Storage Comment:	Best use within three months from the date of receipt of this protein.

Images

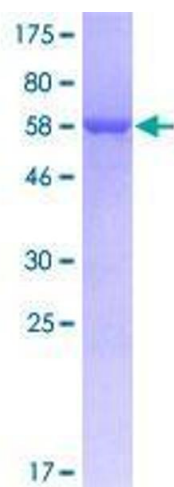


Image 1.