



[Go to Product page](#)

Datasheet for ABIN1355133

GJA8 Protein (AA 1-433) (GST tag)

1 Image

Overview

Quantity:	10 µg
Target:	GJA8
Protein Characteristics:	AA 1-433
Origin:	Human
Source:	Wheat germ
Protein Type:	Recombinant
Purification tag / Conjugate:	This GJA8 protein is labelled with GST tag.
Application:	ELISA, Western Blotting (WB), Antibody Array (AA), Affinity Purification (AP)

Product Details

Purpose:	GJA8 (Human) Recombinant Protein (P01)
Sequence:	MGDWSFLGNI LEEVNEHSTV IGRVWLTVLF IFRILILGTA AEFVWGDEQS DFVCNTQQPG CENVCYDEAF PISHIRLWVL QIIFVSTPSL MYVGHAVHYV RMEEKRKSRE AEELGQQAGT NGGPDQGSVK KSSGSKGTTK FRLEGTLTLLRT YICHIIFKTL FEVGFIVGHY FLYGFRILPL YRCSRWPCPN VVDCFVSRPT EKTIFILFML SVASVSLFLN VMELGHLGLK GIRSALKRPV EQPLGEIPEK SLHSIAVSSI QKAKGYQLLE EEKIVSHYFP LTEVGMVETS PLPAKPFNQF EEKISTGPLG DLSRGYQETL PSYAQVGAQE VEGEGPPAEE GAEPEVGEKK EEAERLTTEE QEKVAVPEGE KVETPGVDKE GEKEEQSEK VSKQGLPAEK TPSLCPCLTT DDARPLSRLS KASSRARSDD LTV
Characteristics:	Human GJA8 full-length ORF (AAI46508.1, 1 a.a. - 433 a.a.) recombinant protein with GST-tag at N-terminal.

Product Details

Purification: in vitro wheat germ expression system

Target Details

Target: GJA8

Alternative Name: GJA8 ([GJA8 Products](#))

Background: Full Gene Name: gap junction protein, alpha 8, 50 kDa
Synonyms: CAE,CAE1,CX50,CZP1,MP70

Gene ID: 2703

Application Details

Application Notes: Optimal working dilution should be determined by the investigator.

Comment: Preparation method: in vitro, wheat germ expression system
Product Quality tested by: 12.5% SDS-PAGE Stained with Coomassie Blue.

Restrictions: For Research Use only

Handling

Buffer: 50 mM Tris-HCl, 10 mM reduced Glutathione, pH =8.0 in the elution buffer.

Handling Advice: Aliquot to avoid repeated freezing and thawing.

Storage: -80 °C

Storage Comment: Best use within three months from the date of receipt of this protein.

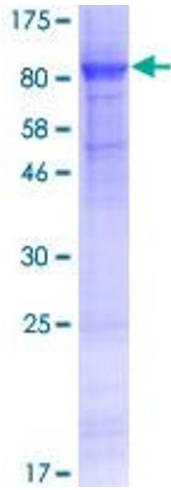


Image 1.