

Datasheet for ABIN1355137  
**GJB1 Protein (AA 1-283) (GST tag)**



[Go to Product page](#)

1 Image

Overview

Quantity:	10 µg
Target:	GJB1
Protein Characteristics:	AA 1-283
Origin:	Human
Source:	Wheat germ
Protein Type:	Recombinant
Purification tag / Conjugate:	This GJB1 protein is labelled with GST tag.
Application:	Western Blotting (WB), ELISA, Antibody Array (AA), Affinity Purification (AP)

Product Details

Purpose:	GJB1 (Human) Recombinant Protein (P01)
Sequence:	MNWTGLYTLL SGVNRHSTAI GRVWLSVIFI FRIMVLVAA ESVWGDEKSS FICNTLQPGC NSVCYDQFFP ISHVRLWSLQ LILVSTPALL VAMHVAHQH IEKMLRLEG HGDPLHLEEV KRHKVHISGT LWWTYVISVV FRLLEAVFM YVFYLLYPGY AMVRLVKCDV YPCPNTVDCF VSRPTEKTVF TVFMLAASGI CIILNVAEVV YLIIRACARR AQRRSNPPSR KGSGFGHRLS PEYKQNEINK LLSEQDGLK DILRRSPGTG AGLAEKSDRC SAC
Characteristics:	Human GJB1 full-length ORF ( NP_000157.1, 1 a.a. - 283 a.a.) recombinant protein with GST-tag at N-terminal.
Purification:	in vitro wheat germ expression system

## Target Details

Target:	GJB1
Alternative Name:	GJB1 ( <a href="#">GJB1 Products</a> )
Background:	Full Gene Name: gap junction protein, beta 1, 32 kDa Synonyms: CMTX,CMTX1,CX32
Gene ID:	2705
NCBI Accession:	<a href="#">NM_000166</a>
Pathways:	<a href="#">Cell-Cell Junction Organization</a>

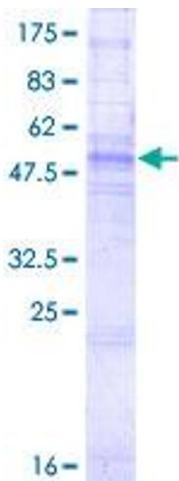
## Application Details

Application Notes:	Optimal working dilution should be determined by the investigator.
Comment:	Preparation method: in vitro, wheat germ expression system Product Quality tested by: 12.5% SDS-PAGE Stained with Coomassie Blue.
Restrictions:	For Research Use only

## Handling

Buffer:	50 mM Tris-HCl, 10 mM reduced Glutathione, pH =8.0 in the elution buffer.
Handling Advice:	Aliquot to avoid repeated freezing and thawing.
Storage:	-80 °C
Storage Comment:	Best use within three months from the date of receipt of this protein.

## Images



**Image 1.**