

Datasheet for ABIN1355151  
**GJB7 Protein (AA 1-223) (GST tag)**



[Go to Product page](#)

1 Image

Overview

Quantity:	25 µg
Target:	GJB7 (GJb7)
Protein Characteristics:	AA 1-223
Origin:	Human
Source:	Wheat germ
Protein Type:	Recombinant
Purification tag / Conjugate:	This GJB7 protein is labelled with GST tag.
Application:	ELISA, Western Blotting (WB), Antibody Array (AA), Affinity Purification (AP)

Product Details

Purpose:	GJB7 (Human) Recombinant Protein (P01)
Sequence:	MSWMFLRDLL SGV NKYSTGT GWIWLAVV FV FRLLVY MVA A EHVWKDEQKE FECNSRQPGC KNVCFDDFFP ISQVRLWALQ LIMVSTPSLL VVLHVAYHEG REKRHRKKLY VSPGTMDGGL WYAYLISLIV KTGFEIGFLV LFYKLYDGFS VPYLIKCDLK PCPNTVD CFI SKPTEKTIFI LFLVITSCLC IVLNFIELSF LVLKCFIKCC LQKYLKQPQV LSV
Characteristics:	Human GJB7 full-length ORF ( NP_940970.1, 1 a.a. - 223 a.a.) recombinant protein with GST-tag at N-terminal.
Purification:	in vitro wheat germ expression system

Target Details

Target:	GJB7 (GJb7)
---------	-------------

## Target Details

Alternative Name:	GJB7 ( <a href="#">GJb7 Products</a> )
Background:	Full Gene Name: gap junction protein, beta 7, 25 kDa Synonyms: CX25,MGC71746,bA136M9.1,connexin25
Gene ID:	375519
NCBI Accession:	<a href="#">NM_198568</a>

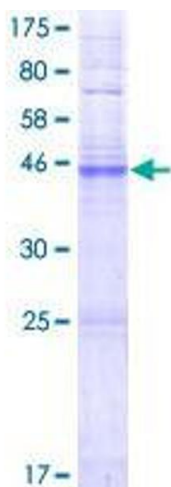
## Application Details

Application Notes:	Optimal working dilution should be determined by the investigator.
Comment:	Preparation method: in vitro, wheat germ expression system Product Quality tested by: 12.5% SDS-PAGE Stained with Coomassie Blue.
Restrictions:	For Research Use only

## Handling

Buffer:	50 mM Tris-HCl, 10 mM reduced Glutathione, pH =8.0 in the elution buffer.
Handling Advice:	Aliquot to avoid repeated freezing and thawing.
Storage:	-80 °C
Storage Comment:	Best use within three months from the date of receipt of this protein.

## Images



**Image 1.**