

Datasheet for ABIN1355174

Gastrokine 2 Protein (GKN2) (AA 1-184) (GST tag)[Go to Product page](#)**1** Image

Overview

| | |
|-------------------------------|---|
| Quantity: | 10 µg |
| Target: | Gastrokine 2 (GKN2) |
| Protein Characteristics: | AA 1-184 |
| Origin: | Human |
| Source: | Wheat germ |
| Protein Type: | Recombinant |
| Purification tag / Conjugate: | This Gastrokine 2 protein is labelled with GST tag. |
| Application: | Western Blotting (WB), ELISA, Antibody Array (AA), Affinity Purification (AP) |

Product Details

| | |
|------------------|---|
| Purpose: | GDDR (Human) Recombinant Protein (P01) |
| Sequence: | MKILVAFLVW LTIFGIQSHG YEVFNII SPS NNGGNVQETV TIDNEKNTAI INIHAGSCSS TTIFDYKHGY IASRVLSRRA CFILKMDHQ N IPPLNNLQWY IYEKQALDNM FSSKYTWVKY NPLESLIKDV DWFLGSPIE KLCKHIPLYK GEVVENTHNV GAGGCAKAGL LGILGISICA DIHV |
| Characteristics: | Human GDDR full-length ORF (NP_872342.2, 1 a.a. - 184 a.a.) recombinant protein with GST-tag at N-terminal. |
| Purification: | in vitro wheat germ expression system |

Target Details

| | |
|-------------------|--|
| Target: | Gastrokine 2 (GKN2) |
| Alternative Name: | GKN2 (GKN2 Products) |

Target Details

| | |
|-----------------|---|
| Background: | Full Gene Name: gastroke 2 Synonyms: GDDR,PRO813,TFIZ1,VLTI465 |
| Gene ID: | 200504 |
| NCBI Accession: | NM_182536 |

Application Details

| | |
|--------------------|--|
| Application Notes: | Optimal working dilution should be determined by the investigator. |
| Comment: | Preparation method: in vitro, wheat germ expression system Product Quality tested by: 12.5% SDS-PAGE Stained with Coomassie Blue. |
| Restrictions: | For Research Use only |

Handling

| | |
|------------------|---|
| Buffer: | 50 mM Tris-HCl, 10 mM reduced Glutathione, pH =8.0 in the elution buffer. |
| Handling Advice: | Aliquot to avoid repeated freezing and thawing. |
| Storage: | -80 °C |
| Storage Comment: | Best use within three months from the date of receipt of this protein. |

Images

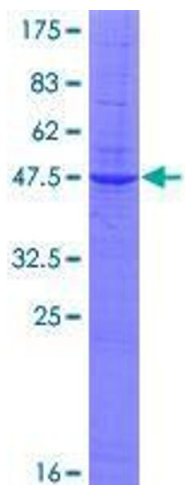


Image 1.