



[Go to Product page](#)

Datasheet for ABIN1355184

GLB1L3 Protein (AA 1-313) (GST tag)

1 Image

Overview

Quantity:	25 µg
Target:	GLB1L3
Protein Characteristics:	AA 1-313
Origin:	Human
Source:	Wheat germ
Protein Type:	Recombinant
Purification tag / Conjugate:	This GLB1L3 protein is labelled with GST tag.
Application:	ELISA, Western Blotting (WB), Antibody Array (AA), Affinity Purification (AP)

Product Details

Purpose:	GLB1L3 (Human) Recombinant Protein (P01)
Sequence:	MKSPPLLSPC LSWKRMAGIF FLPFISGFA PRFKQEENFM LGRAHPSQPR FNWSHLTPLE LKNRSVGLGT ESTGRGKPHF TLEGHKFLIF GGSIHYFRVP REYWRDRLK LKACGFNTVT TYVPWNLHEP ERGKDFDFSGN LDLEAFV LMA AEIGLWVILR PGPYICSEMD LGGLPSWLLQ DPRLLLRTTN KSFIEAVEKY FDHLIPRVIP LQYRQAGPVI AVQVENEYGS FNKDKTYMPY LHKALLRRGI VELLTSDGE KHVLSGHTKG VLAAILNQLK HQDTFNQLHK VQGASIDAGL LSDASQAATS SSL
Characteristics:	Human GLB1L3 full-length ORF (AAH11001.2, 1 a.a. - 313 a.a.) recombinant protein with GST-tag at N-terminal.
Purification:	in vitro wheat germ expression system

Target Details

Target:	GLB1L3
Alternative Name:	GLB1L3 (GLB1L3 Products)
Background:	Full Gene Name: galactosidase, beta 1-like 3 Synonyms: FLJ90231
Gene ID:	112937

Application Details

Application Notes:	Optimal working dilution should be determined by the investigator.
Comment:	Preparation method: in vitro, wheat germ expression system Product Quality tested by: 12.5% SDS-PAGE Stained with Coomassie Blue.
Restrictions:	For Research Use only

Handling

Buffer:	50 mM Tris-HCl, 10 mM reduced Glutathione, pH =8.0 in the elution buffer.
Handling Advice:	Aliquot to avoid repeated freezing and thawing.
Storage:	-80 °C
Storage Comment:	Best use within three months from the date of receipt of this protein.

Images

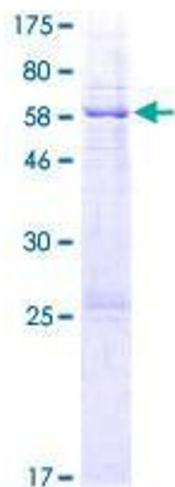


Image 1.