



[Go to Product page](#)

Datasheet for ABIN1355185

GLCE Protein (AA 1-617) (GST tag)

1 Image

Overview

Quantity:	25 µg
Target:	GLCE
Protein Characteristics:	AA 1-617
Origin:	Human
Source:	Wheat germ
Protein Type:	Recombinant
Purification tag / Conjugate:	This GLCE protein is labelled with GST tag.
Application:	Western Blotting (WB), ELISA, Antibody Array (AA), Affinity Purification (AP)

Product Details

Purpose:	GLCE (Human) Recombinant Protein (P01)
Sequence:	MRCLAARVNY KTLIIICALF TLVTVLLWNK CSSDKAIQFP RRSSSGFRVD GF EKRAAASE SNNYMNHVAK QQSEEAFPQE QQKAPPVVG G FNSNVGSKVL GLKYEEIDCL INDEHTIKGR REGNEVFLPF TWVEKYFDVY GKVVQYDGYD RFEFSHSYSK VYAQRAPYHP DGVFMSFEGY NVEVRDRVKC ISGVEGVPLS TQWGPQGYFY PIQIAQYGLS HYSKNLTEKP PHIEVYETAE DRDKNKPNDW TVPKGCFMAN VADKSRFTNV KQFIAPETSE GVSLQLGNTK DFIISFDLKF LTNGSVSVVL ETTEKNQLFT IHYVSNAQLI AFKERDIYIG IGPRTSWSTV TRDLVTDLRK GVGLSNTKAV KPTKIMPKKV VRLIAKGKGF LDNITISTTA HMAAFFAASD WLVRNQDEKG GWPI MVTRKL GEGFKSLEPG WYSAMAQQQA ISTLVRAYLL TKDHIFLNSA LRATAPYKFL SEQHGVKAVF MNKHDWYEEY PTPSSFVLN GFMYSLIGLY DLKETAGEKL GKEARSLYER GMESLKAMLP LYDTGSGTIY DLRHFMLGIA PNLARWDYHT THINQLQLLS TIDESPVFKE FVKRWKSYLK GSRAKHN

Product Details

Characteristics:	Human GLCE full-length ORF (NP_056369.1, 1 a.a. - 617 a.a.) recombinant protein with GST-tag at N-terminal.
Purification:	in vitro wheat germ expression system

Target Details

Target:	GLCE
Alternative Name:	GLCE (GLCE Products)
Background:	Full Gene Name: glucuronic acid epimerase Synonyms: HSEPI,KIAA0836
Gene ID:	26035
NCBI Accession:	NM_015554
Pathways:	Glycosaminoglycan Metabolic Process

Application Details

Application Notes:	Optimal working dilution should be determined by the investigator.
Comment:	Preparation method: in vitro, wheat germ expression system Product Quality tested by: 12.5% SDS-PAGE Stained with Coomassie Blue.
Restrictions:	For Research Use only

Handling

Buffer:	50 mM Tris-HCl, 10 mM reduced Glutathione, pH =8.0 in the elution buffer.
Handling Advice:	Aliquot to avoid repeated freezing and thawing.
Storage:	-80 °C
Storage Comment:	Best use within three months from the date of receipt of this protein.

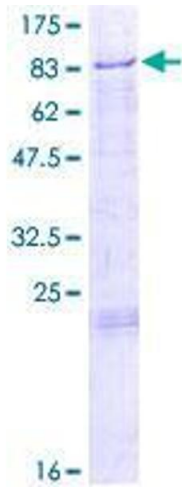


Image 1.