



[Go to Product page](#)

Datasheet for ABIN1355191

GLE1 Protein (AA 140-240) (GST tag)

1 Image

Overview

Quantity:	10 µg
Target:	GLE1
Protein Characteristics:	AA 140-240
Origin:	Human
Source:	Wheat germ
Protein Type:	Recombinant
Purification tag / Conjugate:	This GLE1 protein is labelled with GST tag.
Application:	ELISA, Western Blotting (WB), Antibody Array (AA), Affinity Purification (AP)

Product Details

Purpose:	GLE1L (Human) Recombinant Protein (Q01)
Sequence:	RMKGTEGLRL WQEEQERKVQ ALSEMASEQL KRFDEWKELK QHKEFQDLRE VMEKSSREAL GHQEKLKAEH RHRAKILNLK LREAEQQRVK QAEQERLRKE E
Characteristics:	Human GLE1L partial ORF (NP_001003722.1, 140 a.a. - 240 a.a.) recombinant protein with GST-tag at N-terminal.
Purification:	in vitro wheat germ expression system

Target Details

Target:	GLE1
Alternative Name:	GLE1 (GLE1 Products)

Target Details

Background:	Full Gene Name: GLE1 RNA export mediator homolog (yeast) Synonyms: GLE1L,LCCS,LCCS1,hGLE1
Gene ID:	2733
NCBI Accession:	NM_001003722

Application Details

Application Notes:	Optimal working dilution should be determined by the investigator.
Comment:	Preparation method: in vitro, wheat germ expression system Product Quality tested by: 12.5% SDS-PAGE Stained with Coomassie Blue.
Restrictions:	For Research Use only

Handling

Buffer:	50 mM Tris-HCl, 10 mM reduced Glutathione, pH =8.0 in the elution buffer.
Handling Advice:	Aliquot to avoid repeated freezing and thawing.
Storage:	-80 °C
Storage Comment:	Best use within three months from the date of receipt of this protein.

Images

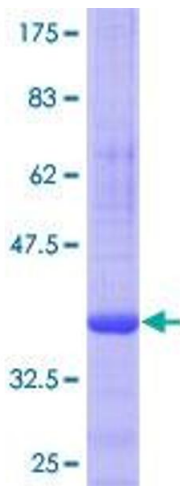


Image 1.