

Datasheet for ABIN1355199
GLI4 Protein (AA 1-376) (GST tag)



[Go to Product page](#)

1 Image

Overview

Quantity:	25 µg
Target:	GLI4
Protein Characteristics:	AA 1-376
Origin:	Human
Source:	Wheat germ
Protein Type:	Recombinant
Purification tag / Conjugate:	This GLI4 protein is labelled with GST tag.
Application:	ELISA, Western Blotting (WB), Antibody Array (AA), Affinity Purification (AP)

Product Details

Purpose:	GLI4 (Human) Recombinant Protein (P01)
Sequence:	MAALGDIQES PSVPSPVLS SPGTPGTQHH EPQLHLHGHQ HGSPGSSPKV LSQPSDLDLQ DVEEVEIGRD TFWPDSEPKP EQAPRSPGSQ APDEGAGGAL RLLRSLPRR ARCSAGFGPE SSAERPAGQP PGAVPCAQPR GAWRVTLVQQ AAAGPEGAPE RAAELGVNFG RSRQGSARGA KPHRCEACGK SFKYNSLLK HQRHTGEKP YACHECGKRF RGWSGFIQHH RIHTGEKPYE CGQCGRAFSH SSHFTQHLRI HNGEKPYKCG ECGQAFSQSS NLVRHQRLHT GEKPYACSQC GKAFIWSSVL IEHQRIHTGE KPYECSDCGK AFRGRSHFFR HLRHTHTGEKP FACGACGKAF GQSSQLIQHQ RVHYRE
Characteristics:	Human GLI4 full-length ORF (NP_612474.1, 1 a.a. - 376 a.a.) recombinant protein with GST-tag at N-terminal.
Purification:	in vitro wheat germ expression system

Target Details

Target:	GLI4
Alternative Name:	GLI4 (GLI4 Products)
Background:	Full Gene Name: GLI-Kruppel family member GLI4 Synonyms: HKR4
Gene ID:	2738
NCBI Accession:	NM_138465

Application Details

Application Notes:	Optimal working dilution should be determined by the investigator.
Comment:	Preparation method: in vitro, wheat germ expression system Product Quality tested by: 12.5% SDS-PAGE Stained with Coomassie Blue.
Restrictions:	For Research Use only

Handling

Buffer:	50 mM Tris-HCl, 10 mM reduced Glutathione, pH =8.0 in the elution buffer.
Handling Advice:	Aliquot to avoid repeated freezing and thawing.
Storage:	-80 °C
Storage Comment:	Best use within three months from the date of receipt of this protein.

Images

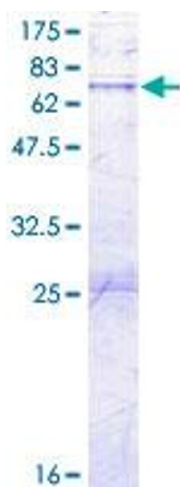


Image 1.