



[Go to Product page](#)

Datasheet for ABIN1355202

GLIPR1 Protein (AA 23-99) (GST tag)

1 Image

Overview

Quantity:	10 µg
Target:	GLIPR1
Protein Characteristics:	AA 23-99
Origin:	Human
Source:	Wheat germ
Protein Type:	Recombinant
Purification tag / Conjugate:	This GLIPR1 protein is labelled with GST tag.
Application:	ELISA, Western Blotting (WB), Antibody Array (AA), Affinity Purification (AP)

Product Details

Purpose:	GLIPR1 (Human) Recombinant Protein (Q01)
Sequence:	NILPDIENED FIKDCVRIHN KFRSEVKPTA SDMLYMTWDP ALAQIAKAWA SNCQFSHNTR LKPPHKLHPN FTSLGEN
Characteristics:	Human GLIPR1 partial ORF (NP_006842, 23 a.a. - 99 a.a.) recombinant protein with GST-tag at N-terminal.
Purification:	in vitro wheat germ expression system

Target Details

Target:	GLIPR1
Alternative Name:	GLIPR1 (GLIPR1 Products)

Target Details

Background: Full Gene Name: GLI pathogenesis-related 1
Synonyms: CRISP7, GLIPR, RTVP1

Gene ID: 11010

NCBI Accession: [NM_006851](#)

Pathways: [Regulation of Lipid Metabolism by PPARalpha](#)

Application Details

Application Notes: Optimal working dilution should be determined by the investigator.

Comment: Preparation method: in vitro, wheat germ expression system
Product Quality tested by: 12.5% SDS-PAGE Stained with Coomassie Blue.

Restrictions: For Research Use only

Handling

Buffer: 50 mM Tris-HCl, 10 mM reduced Glutathione, pH =8.0 in the elution buffer.

Handling Advice: Aliquot to avoid repeated freezing and thawing.

Storage: -80 °C

Storage Comment: Best use within three months from the date of receipt of this protein.

Images

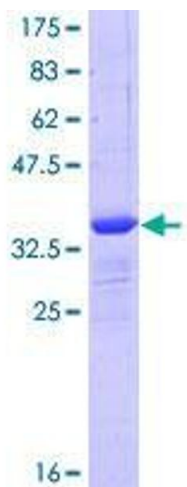


Image 1.