



[Go to Product page](#)

Datasheet for ABIN1355204

## GLIPR1L1 Protein (AA 1-233) (GST tag)

### 1 Image

#### Overview

Quantity:	10 µg
Target:	GLIPR1L1
Protein Characteristics:	AA 1-233
Origin:	Human
Source:	Wheat germ
Protein Type:	Recombinant
Purification tag / Conjugate:	This GLIPR1L1 protein is labelled with GST tag.
Application:	ELISA, Western Blotting (WB), Antibody Array (AA), Affinity Purification (AP)

#### Product Details

Purpose:	GLIPR1L1 (Human) Recombinant Protein (P01)
Sequence:	MALKNKFSCLEWILGLCLVAT TSSKIPSITD PHFIDNCIEA HNEWRGKVNP PAADMKYMIW DKGLAKMAKA WANQCKFEHN DCLDKSYKCY AAFEYVGENI WLGGIKSFTP RHAITAWYNE TQFYDFDLSLCSRVCGHYTQ LVWANSFYVG CAVAMCPNLG GASTAIFVCN YGPAGNFANM PPYVRGESCS LCSKEEKCVK NLCKNPFLKP TGRAPQQTAF NPFLGFLLL RIF
Characteristics:	Human GLIPR1L1 full-length ORF ( NP_689992.1, 1 a.a. - 233 a.a.) recombinant protein with GST-tag at N-terminal.
Purification:	in vitro wheat germ expression system

#### Target Details

Target:	GLIPR1L1
---------	----------

## Target Details

---

Alternative Name:	GLIPR1L1 ( <a href="#">GLIPR1L1 Products</a> )
Background:	Full Gene Name: GLI pathogenesis-related 1 like 1 Synonyms: ALKN2972,MGC26856,PRO7434
Gene ID:	256710
NCBI Accession:	<a href="#">NM_152779</a>

## Application Details

---

Application Notes:	Optimal working dilution should be determined by the investigator.
Comment:	Preparation method: in vitro, wheat germ expression system Product Quality tested by: 12.5% SDS-PAGE Stained with Coomassie Blue.
Restrictions:	For Research Use only

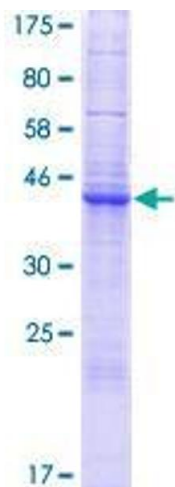
## Handling

---

Buffer:	50 mM Tris-HCl, 10 mM reduced Glutathione, pH =8.0 in the elution buffer.
Handling Advice:	Aliquot to avoid repeated freezing and thawing.
Storage:	-80 °C
Storage Comment:	Best use within three months from the date of receipt of this protein.

## Images

---



**Image 1.**