



[Go to Product page](#)

Datasheet for ABIN1355206

## GLIPR1L2 Protein (AA 1-253) (GST tag)

### 1 Image

#### Overview

Quantity:	25 µg
Target:	GLIPR1L2
Protein Characteristics:	AA 1-253
Origin:	Human
Source:	Wheat germ
Protein Type:	Recombinant
Purification tag / Conjugate:	This GLIPR1L2 protein is labelled with GST tag.
Application:	ELISA, Western Blotting (WB), Antibody Array (AA), Affinity Purification (AP)

#### Product Details

Purpose:	GLIPR1L2 (Human) Recombinant Protein (P01)
Sequence:	MEAARPFARE WRAQSLPLAV GGVLKRLRCE LWLLLLGSSL NARFLPDEED VDFINEYVNL HNELRGDVIP RGSNLRFMTW DVALSRTARA WGKKCLFTHN IYLQDVQMVH PKFYGIGENM WVGPENEFTA SIAIRSWHAE KKMYPFENGCSGDCSNYIQ LVWDHSHYKVG CAVTPCSKIG HIIHAAIFIC NYAPGGTLTR RPYEPGIFCT RCGRRDKCTD FLCSKIKKIN MKKMHNGLDK KNKRLNTSFL WSC
Characteristics:	Human GLIPR1L2 full-length ORF ( NP_689649.1, 1 a.a. - 253 a.a.) recombinant protein with GST-tag at N-terminal.
Purification:	in vitro wheat germ expression system

## Target Details

Target:	GLIPR1L2
Alternative Name:	GLIPR1L2 ( <a href="#">GLIPR1L2 Products</a> )
Background:	Full Gene Name: GLI pathogenesis-related 1 like 2 Synonyms: MGC39497
Gene ID:	144321
NCBI Accession:	<a href="#">NM_152436</a>

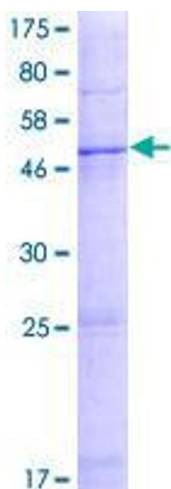
## Application Details

Application Notes:	Optimal working dilution should be determined by the investigator.
Comment:	Preparation method: in vitro, wheat germ expression system Product Quality tested by: 12.5% SDS-PAGE Stained with Coomassie Blue.
Restrictions:	For Research Use only

## Handling

Buffer:	50 mM Tris-HCl, 10 mM reduced Glutathione, pH =8.0 in the elution buffer.
Handling Advice:	Aliquot to avoid repeated freezing and thawing.
Storage:	-80 °C
Storage Comment:	Best use within three months from the date of receipt of this protein.

## Images



**Image 1.**