



[Go to Product page](#)

Datasheet for ABIN1355212

GLIS2 Protein (AA 1-524) (GST tag)

1 Image

Overview

Quantity:	25 µg
Target:	GLIS2
Protein Characteristics:	AA 1-524
Origin:	Human
Source:	Wheat germ
Protein Type:	Recombinant
Purification tag / Conjugate:	This GLIS2 protein is labelled with GST tag.
Application:	ELISA, Western Blotting (WB), Antibody Array (AA), Affinity Purification (AP)

Product Details

Purpose:	GLIS2 (Human) Recombinant Protein (P01)
Sequence:	MHSLDEPLDL KLSITKLRAA REKRERTLGV VRPRALHREL GLVDDSPTPG SPGSPPSGFL LNSKFPEKVE GRFSAAPLVD LSLSPPSGLD SPNGSSSLSP ERQNGDLPP VPSASDFQPL RYLDGVPSFF QFFLPLGSGG ALHLPASSFL TPPKDKCLSP DLPLPKQLVC RWAKCNQLFE LLQDLVDHVN DYHVKPEKDA GYCCHWEGCA RHGRGFNARY KMLIHIRTHT NEKPHRCPTC SKSFSRLENL KIHNRSHTGE KPYVCPYEGC NKRYSNSSDR FKHTRTHYVD KPYYCKMPGC HKRYTDPSSL RKHIKAHG HF VSHEQQLLQ LRPPPKPPLP APDGGPYVSG AQIIIPNPAA LFGGPGPLGL PLPLAPGLD LSALACNGG GSGGGGMGP GLPGPVLPLN LAKNPLLPSF FGAGGLGLPV VLLAGAAGG KAEGEKGRGS VPTRALGMEG HKTPLERTES SCSRSPDGL PLLPGTVLDL STGVNSAASS PEALAPGWVV IPPGSVLLKP AVWN
Characteristics:	Human GLIS2 full-length ORF (AAI46549.1, 1 a.a. - 524 a.a.) recombinant protein with GST-tag at N-terminal.

Product Details

Purification: in vitro wheat germ expression system

Target Details

Target: GLIS2

Alternative Name: GLIS2 ([GLIS2 Products](#))

Background: Full Gene Name: GLIS family zinc finger 2
Synonyms: FLJ38247,NPHP7

Gene ID: 84662

Application Details

Application Notes: Optimal working dilution should be determined by the investigator.

Comment: Preparation method: in vitro, wheat germ expression system
Product Quality tested by: 12.5% SDS-PAGE Stained with Coomassie Blue.

Restrictions: For Research Use only

Handling

Buffer: 50 mM Tris-HCl, 10 mM reduced Glutathione, pH =8.0 in the elution buffer.

Handling Advice: Aliquot to avoid repeated freezing and thawing.

Storage: -80 °C

Storage Comment: Best use within three months from the date of receipt of this protein.

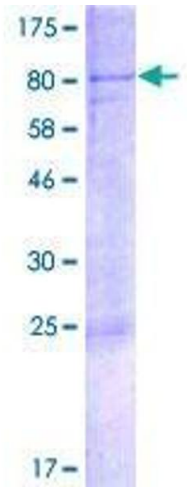


Image 1.