



[Go to Product page](#)

Datasheet for ABIN1355220

## GLOD4 Protein (AA 1-298) (GST tag)

### 1 Image

#### Overview

Quantity:	10 µg
Target:	GLOD4
Protein Characteristics:	AA 1-298
Origin:	Human
Source:	Wheat germ
Protein Type:	Recombinant
Purification tag / Conjugate:	This GLOD4 protein is labelled with GST tag.
Application:	ELISA, Western Blotting (WB), Antibody Array (AA), Affinity Purification (AP)

#### Product Details

Purpose:	GLOD4 (Human) Recombinant Protein (P01)
Sequence:	MAARRALHFV FKVGNRFQTA RFYRDVLGMK VLRHEEFEEG CKAACNGPYD GKWSKTMVGF GPEDDHFVAE LTYNYGVGDY KLGNDFMGIT LASSQAVSNA RKLEWPLTEV AEGVFETEAP GGYKFYLNQR SLPQSDPVLK VTLAVSDLQK SLNYWCNLLG MKIYEKDEEK QRALLGYADN QCKLELQGVK GGVDHAAAFG RIAFSCPQKE LPDLEDLMKR ENQKILTPLV SLDTPGKATV QVVILADPDG HEICFVGDEA FRELSKIDPE GSKLLDDAMA ADKSDEWFAK HNKPKASG
Characteristics:	Human GLOD4 full-length ORF ( AAH15848.1, 1 a.a. - 298 a.a.) recombinant protein with GST-tag at N-terminal.
Purification:	in vitro wheat germ expression system

## Target Details

Target:	GLOD4
Alternative Name:	GLOD4 ( <a href="#">GLOD4 Products</a> )
Background:	Full Gene Name: glyoxalase domain containing 4 Synonyms: C17orf25,CGI-150,HC71
Gene ID:	51031

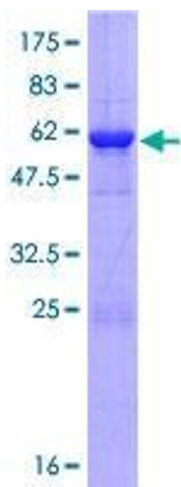
## Application Details

Application Notes:	Optimal working dilution should be determined by the investigator.
Comment:	Preparation method: in vitro, wheat germ expression system Product Quality tested by: 12.5% SDS-PAGE Stained with Coomassie Blue.
Restrictions:	For Research Use only

## Handling

Buffer:	50 mM Tris-HCl, 10 mM reduced Glutathione, pH =8.0 in the elution buffer.
Handling Advice:	Aliquot to avoid repeated freezing and thawing.
Storage:	-80 °C
Storage Comment:	Best use within three months from the date of receipt of this protein.

## Images



**Image 1.**