



[Go to Product page](#)

Datasheet for ABIN1355238

Glutaredoxin 2 Protein (GRX2) (AA 1-124) (GST tag)

1 Image

Overview

Quantity:	10 µg
Target:	Glutaredoxin 2 (GRX2)
Protein Characteristics:	AA 1-124
Origin:	Human
Source:	Wheat germ
Protein Type:	Recombinant
Purification tag / Conjugate:	This Glutaredoxin 2 protein is labelled with GST tag.
Application:	ELISA, Western Blotting (WB), Antibody Array (AA), Affinity Purification (AP)

Product Details

Purpose:	GLRX2 (Human) Recombinant Protein (P01)
Sequence:	MESNTSSSLE NLATAPVNQI QETISDNCVV IFSKTSCSYC TMAKKLFHDM NVNYKVVELD LLEYGNQFQD ALYKMTGERT VPRIFVNGTF IGGATDTHRL HKEGKLLPLV HQCYLKKSQR KEFQ
Characteristics:	Human GLRX2 full-length ORF (AAH28113, 1 a.a. - 124 a.a.) recombinant protein with GST-tag at N-terminal.
Purification:	in vitro wheat germ expression system

Target Details

Target:	Glutaredoxin 2 (GRX2)
Alternative Name:	GLRX2 (GRX2 Products)

Target Details

Background: Full Gene Name: glutaredoxin 2
Synonyms: GRX2,bA101E13.1

Gene ID: 51022

Pathways: [Cell RedoxHomeostasis](#)

Application Details

Application Notes: Optimal working dilution should be determined by the investigator.

Comment: Preparation method: in vitro, wheat germ expression system
Product Quality tested by: 12.5% SDS-PAGE Stained with Coomassie Blue.

Restrictions: For Research Use only

Handling

Buffer: 50 mM Tris-HCl, 10 mM reduced Glutathione, pH =8.0 in the elution buffer.

Handling Advice: Aliquot to avoid repeated freezing and thawing.

Storage: -80 °C

Storage Comment: Best use within three months from the date of receipt of this protein.

Images

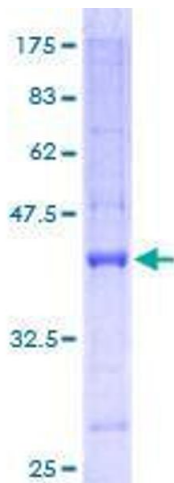


Image 1.