



[Go to Product page](#)

Datasheet for ABIN1355250

GLT8D2 Protein (AA 1-349) (GST tag)

1 Image

Overview

Quantity:	10 µg
Target:	GLT8D2
Protein Characteristics:	AA 1-349
Origin:	Human
Source:	Wheat germ
Protein Type:	Recombinant
Purification tag / Conjugate:	This GLT8D2 protein is labelled with GST tag.
Application:	ELISA, Western Blotting (WB), Antibody Array (AA), Affinity Purification (AP)

Product Details

Purpose:	GLT8D2 (Human) Recombinant Protein (P01)
Sequence:	MALLRKINQV LLFLLIVTLC VILYKKVHKG TVPKNDADDE SETPEELEE IPVVICAAAG RMGATMAAIN SIYSNTDANI LFYVGLRNT LTRIRKWIEH SKLREINFKI VEFNPMVLKG KIRPDSSRPE LLQPLNFVRF YLPLLIHQHE KVIYLDLDDVI VQGDIQELYD TTLALGHAAA FSDDCDLPSA QDINRLVGLQ NTYMGYLDYR KKAIKDLGIS PSTCSFNPGV IVANMTEWKH QRITKQLEKW MQKNVEENLY SSSLGGGVAT SPMLIVFHGK YSTINPLWHI RHLGWNP DAR YSEHFLQEAK LLHWNGRHKP WDFPSVHNDL WESWFVPDPA GIFKLNHHS
Characteristics:	Human GLT8D2 full-length ORF (NP_112592.1, 1 a.a. - 349 a.a.) recombinant protein with GST-tag at N-terminal.
Purification:	in vitro wheat germ expression system

Target Details

Target:	GLT8D2
Alternative Name:	GLT8D2 (GLT8D2 Products)
Background:	Full Gene Name: glycosyltransferase 8 domain containing 2 Synonyms: FLJ31494
Gene ID:	83468
NCBI Accession:	NM_031302

Application Details

Application Notes:	Optimal working dilution should be determined by the investigator.
Comment:	Preparation method: in vitro, wheat germ expression system Product Quality tested by: 12.5% SDS-PAGE Stained with Coomassie Blue.
Restrictions:	For Research Use only

Handling

Buffer:	50 mM Tris-HCl, 10 mM reduced Glutathione, pH =8.0 in the elution buffer.
Handling Advice:	Aliquot to avoid repeated freezing and thawing.
Storage:	-80 °C
Storage Comment:	Best use within three months from the date of receipt of this protein.

Images

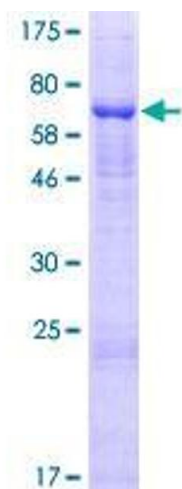


Image 1.