



Datasheet for ABIN1355265
GLUL Protein (AA 274-373) (GST tag)



[Go to Product page](#)

1 Image

Overview

Quantity:	10 µg
Target:	GLUL
Protein Characteristics:	AA 274-373
Origin:	Human
Source:	Wheat germ
Protein Type:	Recombinant
Purification tag / Conjugate:	This GLUL protein is labelled with GST tag.
Application:	ELISA, Western Blotting (WB), Antibody Array (AA), Affinity Purification (AP)

Product Details

Purpose:	GLUL (Human) Recombinant Protein (Q01)
Sequence:	IEKLSKRHQY HIRAYDPKGG LDNARRLTGF HETSNINDFS AGVANRSASI RIPRTVGQEK KGYFEDRRPS ANCDPFSVTE ALIRTCLLNE TGDEPFQYKN
Characteristics:	Human GLUL partial ORF (NP_002056, 274 a.a. - 373 a.a.) recombinant protein with GST-tag at N-terminal.
Purification:	in vitro wheat germ expression system

Target Details

Target:	GLUL
Alternative Name:	GLUL (GLUL Products)

Target Details

Background:	Full Gene Name: glutamate-ammonia ligase (glutamine synthetase) Synonyms: GLNS,GS,PIG43,PIG59
Gene ID:	2752
NCBI Accession:	NM_002065
Pathways:	Positive Regulation of Peptide Hormone Secretion

Application Details

Application Notes:	Optimal working dilution should be determined by the investigator.
Comment:	Preparation method: in vitro, wheat germ expression system Product Quality tested by: 12.5% SDS-PAGE Stained with Coomassie Blue.
Restrictions:	For Research Use only

Handling

Buffer:	50 mM Tris-HCl, 10 mM reduced Glutathione, pH =8.0 in the elution buffer.
Handling Advice:	Aliquot to avoid repeated freezing and thawing.
Storage:	-80 °C
Storage Comment:	Best use within three months from the date of receipt of this protein.

Images

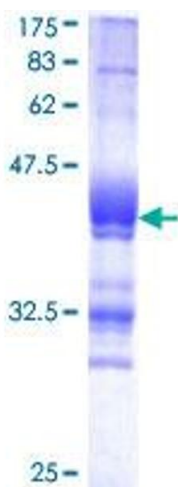


Image 1.