



[Go to Product page](#)

Datasheet for ABIN1355273

GLYATL2 Protein (AA 1-294) (GST tag)

1 Image

Overview

Quantity:	10 µg
Target:	GLYATL2
Protein Characteristics:	AA 1-294
Origin:	Human
Source:	Wheat germ
Protein Type:	Recombinant
Purification tag / Conjugate:	This GLYATL2 protein is labelled with GST tag.
Application:	ELISA, Western Blotting (WB), Antibody Array (AA), Affinity Purification (AP)

Product Details

Purpose:	GLYATL2 (Human) Recombinant Protein (P01)
Sequence:	MLVLHNSQKL QILYKSLEKS IPESIKVYGA IFNIKDKNPF NMEVLVDWAP DYQIVITRPQ KQEMKDDQDH YTNTYHIFTK ASDKLEEVLS YSNVISWEQT LQIQGCQEGL DEAIRKVATS KSVQVDYMKT ILFIPELPKK HKTSSNDKME LFEVDDDNKK GNFSNMFIDA SHAGLVNEHW AFGKNERSLK YIERCLQDFL GFGVLGPEGQ LVSWIVMEQS CELRMGYTVP KYRHQGNMLQ IGYHLEKYLS QKEIPFYFHV ADNNEKSLQA LNNLGFKICP CGWHQWKCTP KKYC
Characteristics:	Human GLYATL2 full-length ORF (AAH16789.1, 1 a.a. - 294 a.a.) recombinant protein with GST-tag at N-terminal.
Purification:	in vitro wheat germ expression system

Target Details

Target:	GLYATL2
Alternative Name:	GLYATL2 (GLYATL2 Products)
Background:	Full Gene Name: glycine-N-acyltransferase-like 2 Synonyms: BXMAS2-10,GATF-B,MGC24009
Gene ID:	219970

Application Details

Application Notes:	Optimal working dilution should be determined by the investigator.
Comment:	Preparation method: in vitro, wheat germ expression system Product Quality tested by: 12.5% SDS-PAGE Stained with Coomassie Blue.
Restrictions:	For Research Use only

Handling

Buffer:	50 mM Tris-HCl, 10 mM reduced Glutathione, pH =8.0 in the elution buffer.
Handling Advice:	Aliquot to avoid repeated freezing and thawing.
Storage:	-80 °C
Storage Comment:	Best use within three months from the date of receipt of this protein.

Images

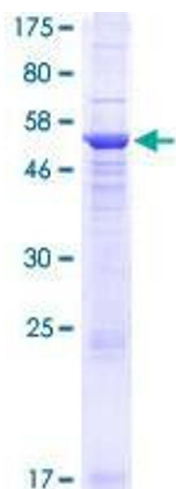


Image 1.