



[Go to Product page](#)

Datasheet for ABIN1355295

## GMFB Protein (AA 1-154) (GST tag)

### 1 Image

#### Overview

Quantity:	10 µg
Target:	GMFB
Protein Characteristics:	AA 1-154
Origin:	Human
Source:	Wheat germ
Protein Type:	Recombinant
Purification tag / Conjugate:	This GMFB protein is labelled with GST tag.
Application:	Western Blotting (WB), ELISA, Antibody Array (AA), Affinity Purification (AP)

#### Product Details

Purpose:	GMFB (Human) Recombinant Protein (P01)
Sequence:	MSESLVCDV AEDLVEKLRK FRFRKETNNA AIIMKIDKDK RLVVLDEELE GISPDELKDE LPERQPRFIV YSYKYQHDDG RVSYP LCFIF SSPVGCKPEQ QMMYAGSKNK LVQTAELTKV FEIRNTEDLT EEWLREKLG F FTNVNFCVSK VFM Y
Characteristics:	Human GMFB full-length ORF ( AAH05359, 1 a.a. - 154 a.a.) recombinant protein with GST-tag at N-terminal.
Purification:	in vitro wheat germ expression system

#### Target Details

Target:	GMFB
Alternative Name:	GMFB ( <a href="#">GMFB Products</a> )

## Target Details

Background: Full Gene Name: glia maturation factor, beta  
Synonyms: GMF

Gene ID: 2764

## Application Details

Application Notes: Optimal working dilution should be determined by the investigator.

Comment: Preparation method: in vitro, wheat germ expression system  
Product Quality tested by: 12.5% SDS-PAGE Stained with Coomassie Blue.

Restrictions: For Research Use only

## Handling

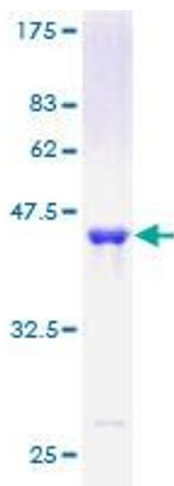
Buffer: 50 mM Tris-HCl, 10 mM reduced Glutathione, pH =8.0 in the elution buffer.

Handling Advice: Aliquot to avoid repeated freezing and thawing.

Storage: -80 °C

Storage Comment: Best use within three months from the date of receipt of this protein.

## Images



**Image 1.**