



[Go to Product page](#)

Datasheet for ABIN1355310

GMPPB Protein (AA 1-360) (GST tag)

1 Image

Overview

Quantity:	10 µg
Target:	GMPPB
Protein Characteristics:	AA 1-360
Origin:	Human
Source:	Wheat germ
Protein Type:	Recombinant
Purification tag / Conjugate:	This GMPPB protein is labelled with GST tag.
Application:	ELISA, Western Blotting (WB), Antibody Array (AA), Affinity Purification (AP)

Product Details

Purpose:	GMPPB (Human) Recombinant Protein (P01)
Sequence:	MKALILVGGY GTRLRPLTLS TPKPLVDFCN KPILLHQVEA LAAAGVDHVI LAVSYMSQVL EKEMKAQEQR LGIRISMSHE EEPLGTAGPL ALARDLLSET ADPFFVLNSD VICDFPFQAM VQFHRHHGQE GSILVTKVEE PSKYGVVVCE ADTGRIHRFV EKPQVFVSNK INAGMYILSP AVLRRRIQLQP TSIEKEVFPI MAKEGQLYAM ELQGFWMDIG QPKDFLTGMC LFLQSLRQKQ PERLCSGPGI VGNVLVDPSA RIGQNCSIGP NVSLGPGVVV EDGVCIRRCT VLRDARIRSH SWLESCIVGW RCRVGQWVRM ENVTVLGEDV IVNDELYLNG ASVLPKHSIG ESVPEPRIIM
Characteristics:	Human GMPPB full-length ORF (AAH01141.1, 1 a.a. - 360 a.a.) recombinant protein with GST-tag at N-terminal.
Purification:	in vitro wheat germ expression system

Target Details

Target:	GMPPB
Alternative Name:	GMPPB (GMPPB Products)
Background:	Full Gene Name: GDP-mannose pyrophosphorylase B Synonyms: KIAA1851
Gene ID:	29925

Application Details

Application Notes:	Optimal working dilution should be determined by the investigator.
Comment:	Preparation method: in vitro, wheat germ expression system Product Quality tested by: 12.5% SDS-PAGE Stained with Coomassie Blue.
Restrictions:	For Research Use only

Handling

Buffer:	50 mM Tris-HCl, 10 mM reduced Glutathione, pH =8.0 in the elution buffer.
Handling Advice:	Aliquot to avoid repeated freezing and thawing.
Storage:	-80 °C
Storage Comment:	Best use within three months from the date of receipt of this protein.

Images

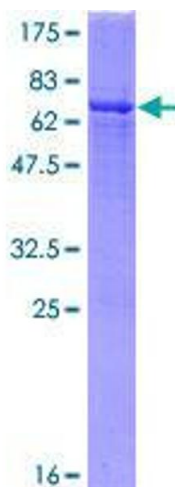


Image 1.