

Datasheet for ABIN135541
anti-CD8B antibody



[Go to Product page](#)

1 Image

Overview

Quantity:	0.5 mg
Target:	CD8B
Reactivity:	Chicken
Host:	Mouse
Clonality:	Monoclonal
Conjugate:	This CD8B antibody is un-conjugated
Application:	Flow Cytometry (FACS)

Product Details

Immunogen:	Chicken splenocytes
Clone:	EP42
Isotype:	IgG2a
Specificity:	Chicken CD8 β , Mr 34 kDa
Characteristics:	Mouse Anti-Chicken CD8b-UNLB
Purification:	Purified

Target Details

Target:	CD8B
Alternative Name:	CD8b (CD8B Products)
Background:	In the chicken, the CD8 molecule is present in two forms: (i) a homodimer of two chains, and (ii)

Target Details

a heterodimer of an chain and a chain.¹ While the vast majority of CD8+ cells in the thymus, spleen, and blood of adult chickens express both CD8- and CD8-chains, a relatively large proportion of the CD8+ TCR- cells in the spleens of embryos and young chicks express only the -chain of CD8. Among intestinal epithelial lymphocytes, the major CD8+ T cell populations present in mice are conserved, but there is a population of TCR- CD8 cells in the chicken that is not found in rodents.³ Chicken CD8 is expressed on approximately 80 % of thymocytes, 45 % of blood mononuclear cells and 50 % of spleen cells, but <1 % of cells in the bursa and bone marrow.

Pathways: [TCR Signaling](#)

Application Details

Application Notes:

- **Applications:** FC - Quality tested , IHC-FS - Reported in literature , IP - Reported in literature
- **Working Dilutions:** Flow Cytometry FITC and BIOT conjugates 1 g/106 cells PE conjugate 0.2 g/106 cells For flow cytometry, the suggested use of these reagents is in a final volume of 100 L

Sample Volume: 1 mL

Restrictions: For Research Use only

Handling

Concentration: 0.5 mg/mL

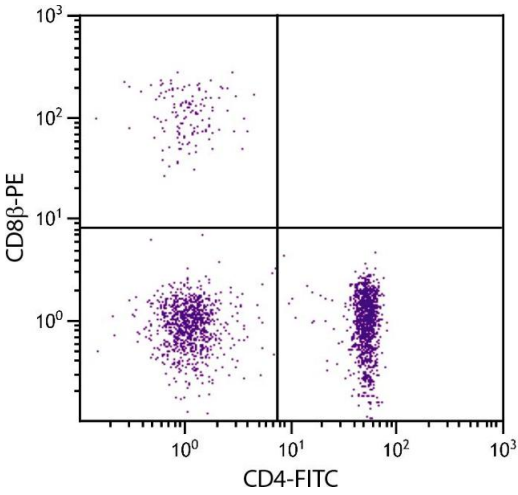
Buffer: 0.5 mg of purified immunoglobulin in 1.0 mL of borate buffered saline, pH 8.2. No preservatives or amine-containing buffer salts added

Preservative: Without preservative

Handling Advice: Each reagent is stable for the period shown on the bottle label if stored as directed.

Storage: 4 °C

Storage Comment: Store at 2-8°C



Flow Cytometry

Image 1. Chicken peripheral blood lymphocytes were stained with Mouse Anti-Chicken CD8β-PE.