



[Go to Product page](#)

Datasheet for ABIN135542
anti-CD8B antibody (FITC)

1 Image

2 Publications

Overview

Quantity:	0.5 mg
Target:	CD8B
Reactivity:	Chicken
Host:	Mouse
Clonality:	Monoclonal
Conjugate:	This CD8B antibody is conjugated to FITC
Application:	Flow Cytometry (FACS)

Product Details

Immunogen:	Chicken splenocytes
Clone:	EP42
Isotype:	IgG2a
Specificity:	Chicken CD8 β , Mr 34 kDa
Characteristics:	Mouse Anti-Chicken CD8b-FITC

Target Details

Target:	CD8B
Alternative Name:	CD8b (CD8B Products)
Background:	In the chicken, the CD8 molecule is present in two forms: (i) a homodimer of two chains, and (ii) a heterodimer of an chain and a chain. ¹ While the vast majority of CD8+ cells in the thymus,

Target Details

spleen, and blood of adult chickens express both CD8- and CD8-chains, a relatively large proportion of the CD8+ TCR- cells in the spleens of embryos and young chicks express only the -chain of CD8. Among intestinal epithelial lymphocytes, the major CD8+ T cell populations present in mice are conserved, but there is a population of TCR- CD8 cells in the chicken that is not found in rodents.³ Chicken CD8 is expressed on approximately 80 % of thymocytes, 45 % of blood mononuclear cells and 50 % of spleen cells, but <1 % of cells in the bursa and bone marrow.

Pathways: [TCR Signaling](#)

Application Details

Application Notes:

- **Applications:** FC - Quality tested , IHC-FS - Reported in literature , IP - Reported in literature
- **Working Dilutions:** Flow Cytometry FITC and BIOT conjugates 1 g/10⁶ cells PE conjugate 0.2 g/10⁶ cells For flow cytometry, the suggested use of these reagents is in a final volume of 100 L

Sample Volume: 1 mL

Restrictions: For Research Use only

Handling

Concentration: 0.5 mg/mL

Buffer: 0.5 mg in 1.0 mL of PBS/Sodium azide

Preservative: Sodium azide

Precaution of Use: This product contains Sodium azide: a POISONOUS AND HAZARDOUS SUBSTANCE which should be handled by trained staff only.

Handling Advice: **Protect conjugated products from light.**
Each reagent is stable for the period shown on the bottle label if stored as directed.

Storage: 4 °C

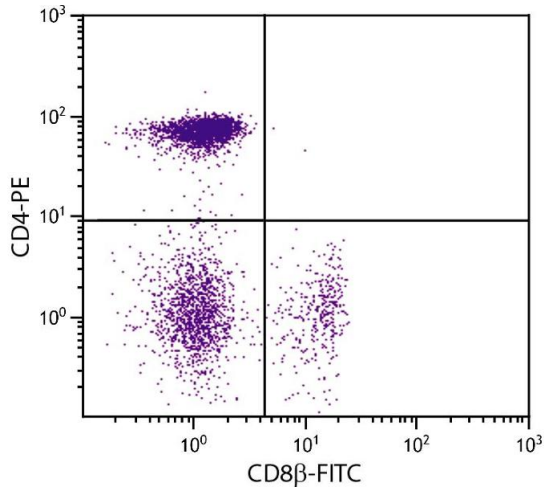
Storage Comment: Store at 2-8°C

Publications

Product cited in: Roos Ljungberg, Börjesson, Martinsson, Wetterö, Kastbom, Svärd: "Presence of salivary IgA anti-citrullinated protein antibodies associate with higher disease activity in patients with rheumatoid arthritis." in: **Arthritis research & therapy**, Vol. 22, Issue 1, pp. 274, (2021) ([PubMed](#))

).

Images



Flow Cytometry

Image 1. Chicken peripheral blood lymphocytes were stained with Mouse Anti-Chicken CD8β-FITC.