



[Go to Product page](#)

Datasheet for ABIN1355467

## Golgin B1 (GOLGB1) (AA 3-91) protein (GST tag)

### 1 Image

#### Overview

Quantity:	10 µg
Target:	Golgin B1 (GOLGB1)
Protein Characteristics:	AA 3-91
Origin:	Human
Source:	Wheat germ
Protein Type:	Recombinant
Purification tag / Conjugate:	GST tag
Application:	ELISA, Western Blotting (WB), Antibody Array (AA), Affinity Purification (AP)

#### Product Details

Purpose:	GOLGB1 (Human) Recombinant Protein (Q01)
Sequence:	SRLSGLANVV LHELSGDDDT DQNMRAPLDP ELHQESDMEF NNTTQEDVQE RLAYAEQLVV ELKDIIIRQD VQLQQKDEAL QEERKAADN
Characteristics:	Human GOLGB1 partial ORF ( NP_004478, 3 a.a. - 91 a.a.) recombinant protein with GST-tag at N-terminal.
Purification:	in vitro wheat germ expression system

#### Target Details

Target:	Golgin B1 (GOLGB1)
Alternative Name:	GOLGB1 ( <a href="#">GOLGB1 Products</a> )

## Target Details

Background:	Full Gene Name: golgin B1, golgi integral membrane protein Synonyms: GCP,GCP372,GIANTIN,GOLIM1
Gene ID:	2804
NCBI Accession:	<a href="#">NM_004487</a>
Pathways:	<a href="#">SARS-CoV-2 Protein Interactome</a>

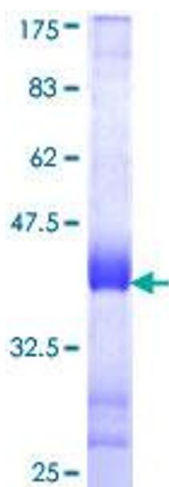
## Application Details

Application Notes:	Optimal working dilution should be determined by the investigator.
Comment:	Preparation method: in vitro, wheat germ expression system Product Quality tested by: 12.5% SDS-PAGE Stained with Coomassie Blue.
Restrictions:	For Research Use only

## Handling

Buffer:	50 mM Tris-HCl, 10 mM reduced Glutathione, pH =8.0 in the elution buffer.
Handling Advice:	Aliquot to avoid repeated freezing and thawing.
Storage:	-80 °C
Storage Comment:	Best use within three months from the date of receipt of this protein.

## Images



**Image 1.**