

Datasheet for ABIN1355469

Golgi Integral Membrane Protein 4 (GOLIM4) (AA 473-568) protein (GST tag)



[Go to Product page](#)

1 Image

Overview

Quantity:	10 µg
Target:	Golgi Integral Membrane Protein 4 (GOLIM4)
Protein Characteristics:	AA 473-568
Origin:	Human
Source:	Wheat germ
Protein Type:	Recombinant
Purification tag / Conjugate:	GST tag
Application:	Western Blotting (WB), ELISA, Antibody Array (AA), Affinity Purification (AP)

Product Details

Purpose:	GOLPH4 (Human) Recombinant Protein (Q01)
Sequence:	HQEQLRQQA H YDAMDNDIVQ GAEDQGIQGE EGAYERDNQH QDEAEGDPGN RHEPREQGPR EADPESEADR AAVEDINPAD DPNNQGEDEF EEAEQV
Characteristics:	Human GOLPH4 partial ORF (NP_055313, 473 a.a. - 568 a.a.) recombinant protein with GST-tag at N-terminal.
Purification:	in vitro wheat germ expression system

Target Details

Target:	Golgi Integral Membrane Protein 4 (GOLIM4)
Alternative Name:	GOLIM4 (GOLIM4 Products)

Target Details

Target Type:	Viral Protein
Background:	Full Gene Name: golgi integral membrane protein 4 Synonyms: GIMPC,GOLPH4,GPP130,P138
Gene ID:	27333
NCBI Accession:	NM_014498

Application Details

Application Notes:	Optimal working dilution should be determined by the investigator.
Comment:	Preparation method: in vitro, wheat germ expression system Product Quality tested by: 12.5% SDS-PAGE Stained with Coomassie Blue.
Restrictions:	For Research Use only

Handling

Buffer:	50 mM Tris-HCl, 10 mM reduced Glutathione, pH =8.0 in the elution buffer.
Handling Advice:	Aliquot to avoid repeated freezing and thawing.
Storage:	-80 °C
Storage Comment:	Best use within three months from the date of receipt of this protein.

Images

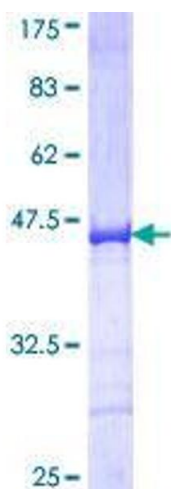


Image 1.