

Datasheet for ABIN135547

anti-MHC Class II I-A antibody (Biotin)[Go to Product page](#)**1** Image

Overview

Quantity:	0.5 mg
Target:	MHC Class II I-A
Reactivity:	Chicken
Host:	Mouse
Clonality:	Monoclonal
Conjugate:	This MHC Class II I-A antibody is conjugated to Biotin
Application:	Flow Cytometry (FACS)

Product Details

Immunogen:	Splenic leukocytes from an outbred nine-week-old chicken
Clone:	Cla
Isotype:	IgM
Specificity:	Chicken/Quail/Dove/Pigeon/Duck Ia, Mr 32 & 27 KDa
Characteristics:	Mouse Anti-Chicken Ia-BIOT
Purification:	Immunoaffinity chromatography

Target Details

Target:	MHC Class II I-A
Alternative Name:	Ia (MHC Class II I-A Products)
Background:	The chicken Ia antigen is expressed on B cells, a subpopulation of the monocyte/macrophage

Target Details

lineage of cells, and mitogen-activated T cells.

Application Details

Application Notes:

- **Applications:** FC - Quality tested , IHC-FS - Reported in literature , ICC - Reported in literature , IP - Reported in literature , Block - Reported in literature
- **Working Dilutions:** Flow Cytometry FITC and BIOT conjugates 1 g/106 cells PE conjugate 0.2 g/106 cells For flow cytometry, the suggested use of these reagents is in a final volume of 100 L

Comment: In vitro inhibition of MLR

Sample Volume: 1 mL

Restrictions: For Research Use only

Handling

Concentration: 0.5 mg/mL

Buffer: 0.5 mg in 1.0 mL of PBS/Sodium azide

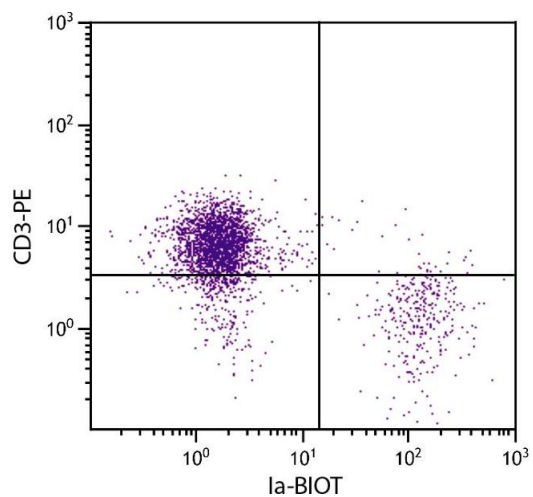
Preservative: Sodium azide

Precaution of Use: This product contains Sodium azide: a POISONOUS AND HAZARDOUS SUBSTANCE which should be handled by trained staff only.

Handling Advice: **Protect conjugated products from light.**
Each reagent is stable for the period shown on the bottle label if stored as directed.

Storage: 4 °C

Storage Comment: Store at 2-8°C



Flow Cytometry

Image 1. Chicken peripheral blood lymphocytes were stained with Mouse Anti-Chicken Ia-BIOT.