



[Go to Product page](#)

Datasheet for ABIN1355471

GOLM1 Protein (AA 302-401) (GST tag)

1 Image

Overview

Quantity:	10 µg
Target:	GOLM1
Protein Characteristics:	AA 302-401
Origin:	Human
Source:	Wheat germ
Protein Type:	Recombinant
Purification tag / Conjugate:	This GOLM1 protein is labelled with GST tag.
Application:	Western Blotting (WB), ELISA, Antibody Array (AA), Affinity Purification (AP)

Product Details

Purpose:	GOLM1 (Human) Recombinant Protein (Q01)
Sequence:	VQAALSVSQE NPEMEGPERD QLVIPDGQEE EQEAAGEGRN QQKLRGEDDY NMDENEAESE TDKQAALAGN DRNIDVFNVE DQKRDTINLL DQREKRNHTL
Characteristics:	Human GOLM1 partial ORF (NP_057632, 302 a.a. - 401 a.a.) recombinant protein with GST-tag at N-terminal.
Purification:	in vitro wheat germ expression system

Target Details

Target:	GOLM1
Alternative Name:	GOLM1 (GOLM1 Products)

Target Details

Background:	Full Gene Name: golgi membrane protein 1 Synonyms: C9orf155,FLJ22634,FLJ23608,GOLPH2,GP73,PSEC0257,bA379P1.3
Gene ID:	51280
NCBI Accession:	NM_016548

Application Details

Application Notes:	Optimal working dilution should be determined by the investigator.
Comment:	Preparation method: in vitro, wheat germ expression system Product Quality tested by: 12.5% SDS-PAGE Stained with Coomassie Blue.
Restrictions:	For Research Use only

Handling

Buffer:	50 mM Tris-HCl, 10 mM reduced Glutathione, pH =8.0 in the elution buffer.
Handling Advice:	Aliquot to avoid repeated freezing and thawing.
Storage:	-80 °C
Storage Comment:	Best use within three months from the date of receipt of this protein.

Images

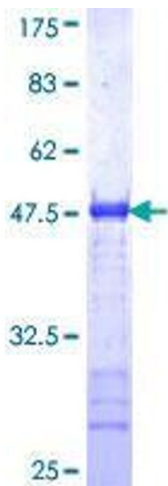


Image 1.