

Datasheet for ABIN135548
anti-MHC Class II I-A antibody (PE)[Go to Product page](#)

1 Image

Overview

Quantity:	0.1 mg
Target:	MHC Class II I-A
Reactivity:	Chicken
Host:	Mouse
Clonality:	Monoclonal
Conjugate:	This MHC Class II I-A antibody is conjugated to PE
Application:	Flow Cytometry (FACS)

Product Details

Immunogen:	Splenic leukocytes from an outbred nine-week-old chicken
Clone:	Cla
Isotype:	IgM
Specificity:	Chicken/Quail/Dove/Pigeon/Duck Ia, Mr 32 & 27 KDa
Characteristics:	Mouse Anti-Chicken Ia-PE
Purification:	Immunoaffinity chromatography

Target Details

Target:	MHC Class II I-A
Alternative Name:	Ia (MHC Class II I-A Products)
Background:	The chicken Ia antigen is expressed on B cells, a subpopulation of the monocyte/macrophage

Target Details

lineage of cells, and mitogen-activated T cells.

Application Details

Application Notes:	<ul style="list-style-type: none">• Applications: FC - Quality tested , IHC-FS - Reported in literature , ICC - Reported in literature , IP - Reported in literature , Block - Reported in literature• Working Dilutions: Flow Cytometry FITC and BIOT conjugates 1 g/106 cells PE conjugate 0.2 g/106 cells For flow cytometry, the suggested use of these reagents is in a final volume of 100 L
--------------------	---

Comment:	In vitro inhibition of MLR
----------	----------------------------

Sample Volume:	1 mL
----------------	------

Restrictions:	For Research Use only
---------------	-----------------------

Handling

Concentration:	0.1 mg/mL
----------------	-----------

Buffer:	0.1 mg in 1.0 mL of PBS/Sodium azide and a stabilizing agent
---------	--

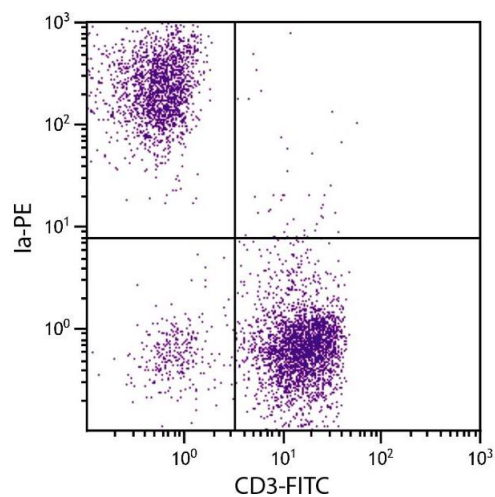
Preservative:	Sodium azide
---------------	--------------

Precaution of Use:	This product contains Sodium azide: a POISONOUS AND HAZARDOUS SUBSTANCE which should be handled by trained staff only.
--------------------	--

Handling Advice:	Do not freeze! Protect conjugated products from light. Each reagent is stable for the period shown on the bottle label if stored as directed.
------------------	---

Storage:	4 °C
----------	------

Storage Comment:	Store at 2-8°C
------------------	----------------



Flow Cytometry

Image 1. Chicken peripheral blood lymphocytes were stained with Mouse Anti-Chicken Ia-PE.