



[Go to Product page](#)

Datasheet for ABIN1355483

## GORASP2 Protein (AA 1-452) (GST tag)

### 1 Image

#### Overview

Quantity:	10 µg
Target:	GORASP2
Protein Characteristics:	AA 1-452
Origin:	Human
Source:	Wheat germ
Protein Type:	Recombinant
Purification tag / Conjugate:	This GORASP2 protein is labelled with GST tag.
Application:	ELISA, Western Blotting (WB), Antibody Array (AA), Affinity Purification (AP)

#### Product Details

Purpose:	GORASP2 (Human) Recombinant Protein (P01)
Sequence:	MGSSQSVEIP GGGTEGYHVL RVQENSPGHR AGLEPFFDFI VSINGSRLNK DNDTLKDLLK ANVEKPVKML IYSSKTLELR ETSVTPSNLW GGQGLLGVSI RFCSFDGANE NVWHVLEVES NSPAALAGLR PHSDYIIGAD TVMNESEDLF SLIETHEAKP LKLYVYNTDT DNCREVIITP NSAWGGEGLS GCGIGYGYLH RIPTRPFEEG KKISLPGQMA GTPITPLKDG FTEVQLSSVN PPSLSPPGTT GIEQLTGLS ISSTPPAVSS VLSTGVPTVP LLPPQVNQSL TSVPPMNPAT TLPGLMPLPA GLPNLPNLNL NLPAPHIMPG VGLPELVNPG LPPLPSMPPR NLPGIAPLPL PSEFLPSFPL VPESSAASS GELLSSLPTT SNAPSDPATT TAKADAASSL TVDVTPTAK APTTVEDRVG DSTPVSEKPV SAAVDANASE SP
Characteristics:	Human GORASP2 full-length ORF ( NP_056345.3, 1 a.a. - 452 a.a.) recombinant protein with GST-tag at N-terminal.

## Product Details

---

Purification: in vitro wheat germ expression system

## Target Details

---

Target: GORASP2

Alternative Name: GORASP2 ([GORASP2 Products](#))

Background: Full Gene Name: golgi reassembly stacking protein 2, 55 kDa  
Synonyms: DKFZp434D156,FLJ13139,GOLPH6,GRASP55,GRS2,p59

Gene ID: 26003

NCBI Accession: [NM\\_015530](#)

## Application Details

---

Application Notes: Optimal working dilution should be determined by the investigator.

Comment: Preparation method: in vitro, wheat germ expression system  
Product Quality tested by: 12.5% SDS-PAGE Stained with Coomassie Blue.

Restrictions: For Research Use only

## Handling

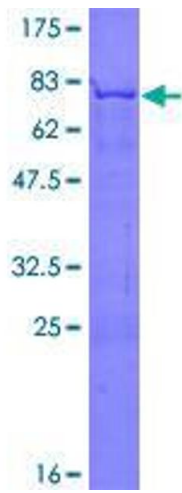
---

Buffer: 50 mM Tris-HCl, 10 mM reduced Glutathione, pH =8.0 in the elution buffer.

Handling Advice: Aliquot to avoid repeated freezing and thawing.

Storage: -80 °C

Storage Comment: Best use within three months from the date of receipt of this protein.



**Image 1.**