



[Go to Product page](#)

Datasheet for ABIN1355487

## GS28 Protein (AA 1-250) (GST tag)

### 1 Image

#### Overview

Quantity:	10 µg
Target:	GS28 (GOSR1)
Protein Characteristics:	AA 1-250
Origin:	Human
Source:	Wheat germ
Protein Type:	Recombinant
Purification tag / Conjugate:	This GS28 protein is labelled with GST tag.
Application:	ELISA, Western Blotting (WB), Antibody Array (AA), Affinity Purification (AP)

#### Product Details

Purpose:	GOSR1 (Human) Recombinant Protein (P01)
Sequence:	MAAGTSSYWE DLRKQARQLE NELDLKLVSF SKLCTSYSHS STRDGRRDRY SSDTPLLNG SSQDRMFETM AIEIEQLLAR LTGVNDKMAE YSNSAGVPSL NAALMHTLQR HRDILQDYTH EFHKTKANFM AIRERENLMG SVRKDIESYK SGSGVNNRRT ELFLKEHDHL RNSDRLIEET ISIAMATKEN MTSQRGMLKS IHSKMNTLAN RFPVNSLIQ RINLRKRDRS LILGGVIGIC TILLLLYAFH
Characteristics:	Human GOSR1 full-length ORF ( NP_004862.1, 1 a.a. - 250 a.a.) recombinant protein with GST-tag at N-terminal.
Purification:	in vitro wheat germ expression system

## Target Details

Target:	GS28 (GOSR1)
Alternative Name:	GOSR1 ( <a href="#">GOSR1 Products</a> )
Background:	Gene: golgi SNAP receptor complex member 1 Synonyms: GOLIM2, GOS-28, GOS28, GOS28/P28, GS28, P28
Gene ID:	9527
NCBI Accession:	<a href="#">NM_004871</a>

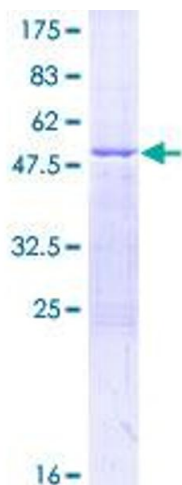
## Application Details

Application Notes:	Optimal working dilution should be determined by the investigator.
Restrictions:	For Research Use only

## Handling

Buffer:	50 mM Tris-HCl, 10 mM reduced Glutathione, pH =8.0 in the elution buffer.
Handling Advice:	Aliquot to avoid repeated freezing and thawing.
Storage:	-80 °C
Storage Comment:	Best use within three months from the date of receipt of this protein.

## Images



**Image 1.**