

Datasheet for ABIN135549

Mouse anti-Chicken IgM Antibody[Go to Product page](#)**1** Image

Overview

Quantity:	0.5 mg
Target:	IgM
Reactivity:	Chicken
Host:	Mouse
Clonality:	Monoclonal
Application:	Flow Cytometry (FACS)

Product Details

Immunogen:	Affinity purified chicken Ig or isolated lymphocytes
Clone:	M-4
Isotype:	IgM
Specificity:	Chicken/Turkey IgM, Mr 820-950 kDa
Characteristics:	Mouse Anti-Chicken IgM-UNLB
Purification:	Purified

Target Details

Target:	IgM
Abstract:	IgM Products
Target Type:	Antibody

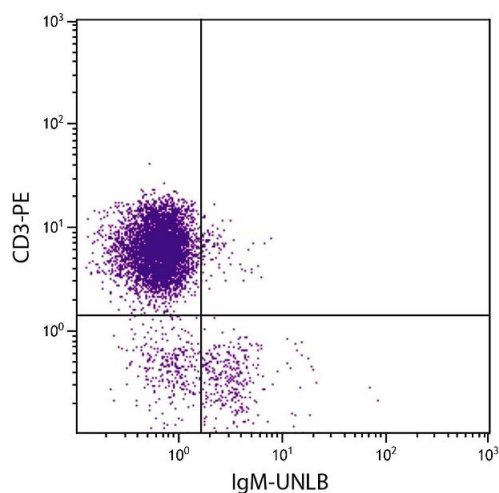
Application Details

Application Notes:	<ul style="list-style-type: none">• Applications: FC - Quality tested , IP - Reported in literature , Stim - Reported in literature , Apop - Reported in literature• Working Dilutions: Flow Cytometry Purified (UNLB) antibody 1 g/106 cells BIOT conjugate 1 g/106 cells For flow cytometry, the suggested use of these reagents is in a final volume of 100 L
Comment:	In ovo suppression of chicken B lymphocytes, In vitro activation of chicken peripheral B lymphocyte
Restrictions:	For Research Use only

Handling

Concentration:	0.5 mg/mL
Buffer:	0.5 mg of purified immunoglobulin in 1.0 mL of borate buffered saline, pH 8.2. No preservatives or amine-containing buffer salts added
Preservative:	Without preservative
Handling Advice:	Dilute only prior to immediate use Each reagent is stable for the period shown on the bottle label if stored as directed.
Storage:	4 °C
Storage Comment:	Store at 2-8°C

Images



Flow Cytometry

Image 1. Chicken peripheral blood lymphocytes were stained with Mouse Anti-Chicken IgM-UNLB.