



[Go to Product page](#)

Datasheet for ABIN1355492

GOT1 Protein (AA 1-413) (GST tag)

1 Image

Overview

Quantity:	10 µg
Target:	GOT1
Protein Characteristics:	AA 1-413
Origin:	Human
Source:	Wheat germ
Protein Type:	Recombinant
Purification tag / Conjugate:	This GOT1 protein is labelled with GST tag.
Application:	Western Blotting (WB), ELISA, Antibody Array (AA), Affinity Purification (AP)

Product Details

Purpose:	GOT1 (Human) Recombinant Protein (P01)
Sequence:	MAPPSVFAEV PQAQPVLVFK LTADFREDPD PRKVNLVGVA YRTDDCHPWV LPVVKKVEQK IANDNSLNHE YLPILGLAEF RSCASRLALG DDSPALKEKR VGGVQSLGGT GALRIGADFL ARWYNGTNNK NTPVYVSSPT WENHNAVFSAGFKDIRSYR YWDAEKRGLD LQGFLNDLEN APEFSIVVLH ACAHNPTGID PTPEQWKQIA SVMKHRFLFP FFDSAYQGFA SGNLERDAWA IRYFVSEGFE FFCAQSFSKN FGLYNERVGN LTVVGKEPES ILQVLSQMEK IVRITWSNPP AQQARIVAST LSNPELFEEW TGNVKTMA DR ILTMRSELRA RLEALKTPGT WNHITDQIGM FSFTGLNPKQ VEYLVNEKHI YLLPSGRINV SGLTTKNLDY VATSIHEAVT KIQ
Characteristics:	Human GOT1 full-length ORF (NP_002070.1, 1 a.a. - 413 a.a.) recombinant protein with GST-tag at N-terminal.
Purification:	in vitro wheat germ expression system

Target Details

Target:	GOT1
Alternative Name:	GOT1 (GOT1 Products)
Background:	Full Gene Name: glutamic-oxaloacetic transaminase 1, soluble (aspartate aminotransferase 1) Synonyms: GIG18
Gene ID:	2805
NCBI Accession:	NM_002079
Pathways:	Hepatitis C , Monocarboxylic Acid Catabolic Process , Methionine Biosynthetic Process

Application Details

Application Notes:	Optimal working dilution should be determined by the investigator.
Comment:	Preparation method: in vitro, wheat germ expression system Product Quality tested by: 12.5% SDS-PAGE Stained with Coomassie Blue.
Restrictions:	For Research Use only

Handling

Buffer:	50 mM Tris-HCl, 10 mM reduced Glutathione, pH =8.0 in the elution buffer.
Handling Advice:	Aliquot to avoid repeated freezing and thawing.
Storage:	-80 °C
Storage Comment:	Best use within three months from the date of receipt of this protein.

Images

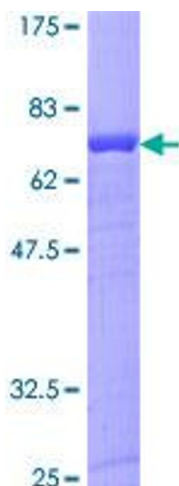


Image 1.