



[Go to Product page](#)

Datasheet for ABIN1355494

GOT2 Protein (AA 1-430) (GST tag)

1 Image

Overview

Quantity:	25 µg
Target:	GOT2
Protein Characteristics:	AA 1-430
Origin:	Human
Source:	Wheat germ
Protein Type:	Recombinant
Purification tag / Conjugate:	This GOT2 protein is labelled with GST tag.
Application:	Western Blotting (WB), ELISA, Antibody Array (AA), Affinity Purification (AP)

Product Details

Purpose:	GOT2 (Human) Recombinant Protein (P01)
Sequence:	MALLHSGRVL PGIAAAFHPG LAAAASARAS SWWTHVEMGP PDPILGVTEA FKRDTNSKKM NLGVGAYRDD NGKPYVLPVS RKAEAQIAAK NLDKEYLPIG GLAEFCKASA ELALGENSEV LKSGRFVTVQ TISGTGALRI GASFLQRFFK FSRDVFLPKP TWGNHTPIFR DAGMQLQGYR YYDPKTCGFD FTGAVEDISK IPEQSVLLLH ACAHNPTGVD PRPEQWKEIA TVVKRNLFA FFDMAYQGFA SGDGDKDAWA VRHFIEQGIN VCLCQSYAKN MGLYGERVGA FTMVCKDADE AKRVESQLKI LIRPMYSNPP LNGARIAAAI LNTPLDRKQW LQEVKVMADR IIGMRTLQVLS NLKKEGSTHN WQHITDQIGM FCFTGLKPEQ VERLIKEFSI YMTKDGRISV AGVTSSNVGY LAHAIHQATK
Characteristics:	Human GOT2 full-length ORF (AAH00525.1, 1 a.a. - 430 a.a.) recombinant protein with GST-tag at N-terminal.

Product Details

Purification: in vitro wheat germ expression system

Target Details

Target: GOT2

Alternative Name: GOT2 ([GOT2 Products](#))

Background: Full Gene Name: glutamic-oxaloacetic transaminase 2, mitochondrial (aspartate aminotransferase 2)
Synonyms: FLJ40994,KAT4,KATIV,mitAAT

Gene ID: 2806

Pathways: [Monocarboxylic Acid Catabolic Process](#)

Application Details

Application Notes: Optimal working dilution should be determined by the investigator.

Comment: Preparation method: in vitro, wheat germ expression system
Product Quality tested by: 12.5% SDS-PAGE Stained with Coomassie Blue.

Restrictions: For Research Use only

Handling

Buffer: 50 mM Tris-HCl, 10 mM reduced Glutathione, pH =8.0 in the elution buffer.

Handling Advice: Aliquot to avoid repeated freezing and thawing.

Storage: -80 °C

Storage Comment: Best use within three months from the date of receipt of this protein.

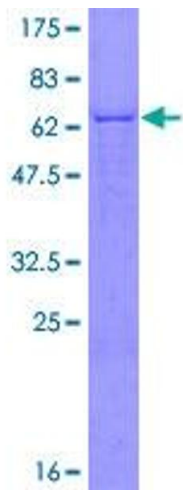


Image 1.