

Datasheet for ABIN1355505
GPA33 Protein (AA 1-319) (GST tag)



[Go to Product page](#)

1 Image

Overview

Quantity:	10 µg
Target:	GPA33
Protein Characteristics:	AA 1-319
Origin:	Human
Source:	Wheat germ
Protein Type:	Recombinant
Purification tag / Conjugate:	This GPA33 protein is labelled with GST tag.
Application:	Western Blotting (WB), ELISA, Antibody Array (AA), Affinity Purification (AP)

Product Details

Purpose:	GPA33 (Human) Recombinant Protein (P01)
Sequence:	MVGKMWPVLW TLCAVRVTD AISVETPQDV LRASQGKSVT LPCTYHTSTS SREGLIQWDK LLLTHTERVV IWPFSNKNYI HGELYKNRVS ISNNAEQSDA SITIDQLTMA DNGTYECSVS LMSDLEGNTK SRVRLVLVLP PSKPECGIEG ETIIGNNIQL TCQSKEGSPT PQYSWKRYNI LNQEQPLAQP ASGQPVSLKN ISTDTSGYYI CTSSNEEGTQ FCNITVAVRS PSMNVALYVG IAVGVVAALI IIGIIYCCC CRGKDDNTED KEDARPNREA YEEPPEQLRE LSREREEEDD YRQEEQRSTG RESPDHLDQ
Characteristics:	Human GPA33 full-length ORF (NP_005805.1, 1 a.a. - 319 a.a.) recombinant protein with GST-tag at N-terminal.
Purification:	in vitro wheat germ expression system

Target Details

Target:	GPA33
Alternative Name:	GPA33 (GPA33 Products)
Background:	Full Gene Name: glycoprotein A33 (transmembrane) Synonyms: A33,MGC129986,MGC129987
Gene ID:	10223
NCBI Accession:	NM_005814

Application Details

Application Notes:	Optimal working dilution should be determined by the investigator.
Comment:	Preparation method: in vitro, wheat germ expression system Product Quality tested by: 12.5% SDS-PAGE Stained with Coomassie Blue.
Restrictions:	For Research Use only

Handling

Buffer:	50 mM Tris-HCl, 10 mM reduced Glutathione, pH =8.0 in the elution buffer.
Handling Advice:	Aliquot to avoid repeated freezing and thawing.
Storage:	-80 °C
Storage Comment:	Best use within three months from the date of receipt of this protein.

Images

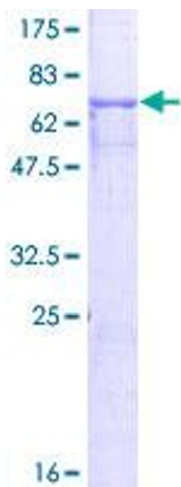


Image 1.