



[Go to Product page](#)

Datasheet for ABIN1355507

GPA33 Protein (AA 26-125) (GST tag)

1 Image

Overview

Quantity:	10 µg
Target:	GPA33
Protein Characteristics:	AA 26-125
Origin:	Human
Source:	Wheat germ
Protein Type:	Recombinant
Purification tag / Conjugate:	This GPA33 protein is labelled with GST tag.
Application:	Western Blotting (WB), ELISA, Antibody Array (AA), Affinity Purification (AP)

Product Details

Purpose:	GPA33 (Human) Recombinant Protein (Q01)
Sequence:	TPQDVLRSQ GKSVTLPCY HTSTSSREGL IQWDKLLLTH TERWVWPFS NKNYIHGELY KNRVSISNNA EQSDASITID QLTMADNGTY ECSVSLMSDL
Characteristics:	Human GPA33 partial ORF (NP_005805.1, 26 a.a. - 125 a.a.) recombinant protein with GST-tag at N-terminal.
Purification:	in vitro wheat germ expression system

Target Details

Target:	GPA33
Alternative Name:	GPA33 (GPA33 Products)

Target Details

Background: Full Gene Name: glycoprotein A33 (transmembrane)
Synonyms: A33,MGC129986,MGC129987

Gene ID: 10223

NCBI Accession: [NM_005814](#)

Application Details

Application Notes: Optimal working dilution should be determined by the investigator.

Comment: Preparation method: in vitro, wheat germ expression system
Product Quality tested by: 12.5% SDS-PAGE Stained with Coomassie Blue.

Restrictions: For Research Use only

Handling

Buffer: 50 mM Tris-HCl, 10 mM reduced Glutathione, pH =8.0 in the elution buffer.

Handling Advice: Aliquot to avoid repeated freezing and thawing.

Storage: -80 °C

Storage Comment: Best use within three months from the date of receipt of this protein.

Images

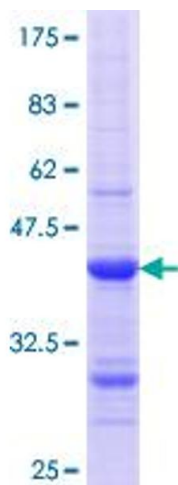


Image 1.