

Datasheet for ABIN1355514
GPAM Protein (AA 749-828) (GST tag)



[Go to Product page](#)

1 Image

Overview

Quantity:	10 µg
Target:	GPAM
Protein Characteristics:	AA 749-828
Origin:	Human
Source:	Wheat germ
Protein Type:	Recombinant
Purification tag / Conjugate:	This GPAM protein is labelled with GST tag.
Application:	Western Blotting (WB), ELISA, Antibody Array (AA), Affinity Purification (AP)

Product Details

Purpose:	GPAM (Human) Recombinant Protein (Q01)
Sequence:	PEYLQKLHKY LITRTERNVA VYAESATYCL VKNAVKMFKD IGVFKETKQK RVSVLELSST FLPQCNRQKL LEYILSFVVL
Characteristics:	Human GPAM partial ORF (NP_065969, 749 a.a. - 828 a.a.) recombinant protein with GST-tag at N-terminal.
Purification:	in vitro wheat germ expression system

Target Details

Target:	GPAM
Alternative Name:	GPAM (GPAM Products)

Target Details

Background:	Full Gene Name: glycerol-3-phosphate acyltransferase, mitochondrial Synonyms: GPAT1,KIAA1560,MGC26846,RP11-426E5.2
Gene ID:	57678
NCBI Accession:	NM_020918
Pathways:	Activated T Cell Proliferation

Application Details

Application Notes:	Optimal working dilution should be determined by the investigator.
Comment:	Preparation method: in vitro, wheat germ expression system Product Quality tested by: 12.5% SDS-PAGE Stained with Coomassie Blue.
Restrictions:	For Research Use only

Handling

Buffer:	50 mM Tris-HCl, 10 mM reduced Glutathione, pH =8.0 in the elution buffer.
Handling Advice:	Aliquot to avoid repeated freezing and thawing.
Storage:	-80 °C
Storage Comment:	Best use within three months from the date of receipt of this protein.

Images

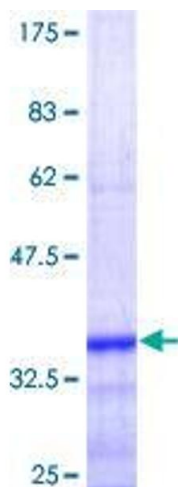


Image 1.