



[Go to Product page](#)

Datasheet for ABIN1355518

GPATCH3 Protein (AA 1-525) (GST tag)

1 Image

Overview

Quantity:	10 µg
Target:	GPATCH3
Protein Characteristics:	AA 1-525
Origin:	Human
Source:	Wheat germ
Protein Type:	Recombinant
Purification tag / Conjugate:	This GPATCH3 protein is labelled with GST tag.
Application:	ELISA, Western Blotting (WB), Antibody Array (AA), Affinity Purification (AP)

Product Details

Purpose:	GPATCH3 (Human) Recombinant Protein (P01)
Sequence:	<p>MAVPGEAEEE ATVYLVVSGI PSVLRSAHLR SYFSQFREER GGGFLCFHYR HRPERAPPQA APNSALIPTD PAAEGQLLSQ TSATDVRPLS TRDSTPIQTR TCCCVISVRG LAQAQRLIRM YSGRRWLDSD GTWLPGRCLI RRLRLPTEAS GLGSFPFKTR KELQSWKAEN EAFTLADLKQ LPELNPPVLM PRGNVGTPLR VFLELIRACR LPPRIITQLQ LQFPKTGSSR RYGNVPFEYE DSETVEQEEL VYTAEGEEIP QGTYLADIPA SPCGEPEEEV GKEEEEEESH S DEDDDRGE EW ERHEALHEDV TGQERTTEQL FEEIEELKWE KGGSGLVFYT DAQFWQEEEG DFDEQTADDW DVDMSVYYDR DGGDKDARDS VQMRLEQLR DGQEDGSVIE RQVGTFERHT KGIGRKVMER QGWAEGQGLG CRCSGVPEAL DSDGQHPRCK RGLGYHGEKL QPFGQLKRPR RNGLGLISTI YDEPLPQDQT ELLRRQPPT SMKFRTDMAF VRGSSCASDS PSLPD</p>
Characteristics:	Human GPATCH3 full-length ORF (AAH07767.1, 1 a.a. - 525 a.a.) recombinant protein with GST-tag at N-terminal.

Product Details

Purification: in vitro wheat germ expression system

Target Details

Target: GPATCH3

Alternative Name: GPATCH3 ([GPATCH3 Products](#))

Background: Full Gene Name: G patch domain containing 3
Synonyms: DKFZp686E0221,FLJ12455,GPATC3

Gene ID: 63906

Application Details

Application Notes: Optimal working dilution should be determined by the investigator.

Comment: Preparation method: in vitro, wheat germ expression system
Product Quality tested by: 12.5% SDS-PAGE Stained with Coomassie Blue.

Restrictions: For Research Use only

Handling

Buffer: 50 mM Tris-HCl, 10 mM reduced Glutathione, pH =8.0 in the elution buffer.

Handling Advice: Aliquot to avoid repeated freezing and thawing.

Storage: -80 °C

Storage Comment: Best use within three months from the date of receipt of this protein.

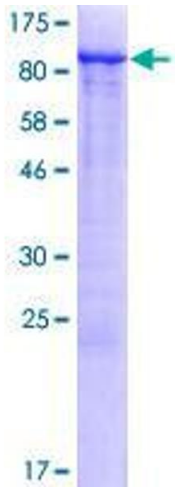


Image 1.