



[Go to Product page](#)

Datasheet for ABIN1355540

Gephyrin Protein (GPHN) (AA 677-769) (GST tag)

1 Image

Overview

Quantity:	10 µg
Target:	Gephyrin (GPHN)
Protein Characteristics:	AA 677-769
Origin:	Human
Source:	Wheat germ
Protein Type:	Recombinant
Purification tag / Conjugate:	This Gephyrin protein is labelled with GST tag.
Application:	ELISA, Western Blotting (WB), Antibody Array (AA), Affinity Purification (AP)

Product Details

Purpose:	GPHN (Human) Recombinant Protein (Q01)
Sequence:	RKMQGILDPR PTIIKARLSC DVKLDPRPEY HRCILTWHHQ EPLPWAQSTG NQMSSRLMSM RSANGLMLLP PKTEQYVELH KGEVVDVMVI GRL
Characteristics:	Human GPHN partial ORF (NP_065857, 677 a.a. - 769 a.a.) recombinant protein with GST-tag at N-terminal.
Purification:	in vitro wheat germ expression system

Target Details

Target:	Gephyrin (GPHN)
Alternative Name:	GPHN (GPHN Products)

Target Details

Background: Full Gene Name: gephyrin
Synonyms: GEPH,GPH,GPHRYN,KIAA1385

Gene ID: 10243

NCBI Accession: [NM_020806](#)

Pathways: [Synaptic Membrane](#), [Skeletal Muscle Fiber Development](#)

Application Details

Application Notes: Optimal working dilution should be determined by the investigator.

Comment: Preparation method: in vitro, wheat germ expression system
Product Quality tested by: 12.5% SDS-PAGE Stained with Coomassie Blue.

Restrictions: For Research Use only

Handling

Buffer: 50 mM Tris-HCl, 10 mM reduced Glutathione, pH =8.0 in the elution buffer.

Handling Advice: Aliquot to avoid repeated freezing and thawing.

Storage: -80 °C

Storage Comment: Best use within three months from the date of receipt of this protein.

Images

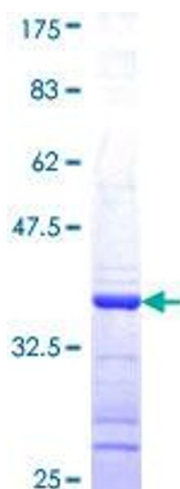


Image 1.