

Datasheet for ABIN135557

Mouse anti-Chicken IgA Antibody[Go to Product page](#)**1** Image

Overview

Quantity:	0.5 mg
Target:	IgA
Reactivity:	Chicken
Host:	Mouse
Clonality:	Monoclonal
Application:	ELISA, Immunohistochemistry (IHC), Flow Cytometry (FACS)

Product Details

Clone:	A-1
Isotype:	IgG1
Purification:	Purified

Target Details

Target:	IgA
Abstract:	IgA Products
Target Type:	Antibody

Application Details

Application Notes:	Each laboratory should determine an optimum working titer for use in its particular application. Other applications have not been tested but use in such assays should not necessarily be excluded.
--------------------	--

Application Details

Restrictions: For Research Use only

Handling

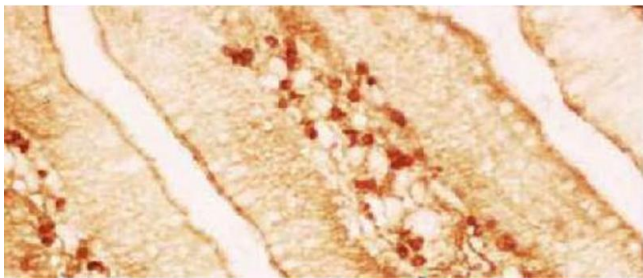
Buffer: 0.5 mg of purified immunoglobulin in 1.0 mL of 100 mM borate buffered saline, pH 8.0.

Preservative: Azide free

Handling Advice: Dilute only prior to immediate use
Each reagent is stable for the period shown on the bottle label if stored as directed.

Storage: 4 °C

Images



Immunohistochemistry

Image 1. Paraffin embedded chicken jejunum section was stained with Mouse Anti-Chicken IgA-UNLB