

Datasheet for ABIN1355572
**G Protein-Coupled Receptor 12 Protein (GPR12) (AA 1-334)
 (GST tag)**



[Go to Product page](#)

1 Image

Overview

Quantity:	10 µg
Target:	G Protein-Coupled Receptor 12 (GPR12)
Protein Characteristics:	AA 1-334
Origin:	Human
Source:	Wheat germ
Protein Type:	Recombinant
Purification tag / Conjugate:	This G Protein-Coupled Receptor 12 protein is labelled with GST tag.
Application:	ELISA, Western Blotting (WB), Affinity Purification (AP), Antibody Array (AA)

Product Details

Purpose:	GPR12 (Human) Recombinant Protein (P01)
Sequence:	MNEDLKVNLS GLPRDYLDAA AAENISAAVS SRVPAVEPEP ELVWNPWDIV LCTSGTLISC ENAIVVLIIF HNPSLRAPMF LLIGSLALAD LLAGIGLITN FVFAYLLQSE ATKLVITIGLI VASFSASVCS LLAITVDRYL SLYYALTYHS ERTVTFTYVM LVMLWGTSIC LGLLPVMGWN CLRDESTCSV VRPLTKNNAA ILSVSFLFMF ALMLQLYIQI CKIVMRHAHQ IALQHFLAT SHYVTTRKGV STLAIILGTF AACWMPFTLY SLIADYTYPY IYTYATLLPA TYNSIINPVI YAFRNQEIQK ALCLICCGCI PSSLAQRARS PSDV
Characteristics:	Human GPR12 full-length ORF (NP_005279.1, 1 a.a. - 334 a.a.) recombinant protein with GST-tag at N-terminal.
Purification:	in vitro wheat germ expression system

Target Details

Target:	G Protein-Coupled Receptor 12 (GPR12)
Alternative Name:	GPR12 (GPR12 Products)
Background:	Full Gene Name: G protein-coupled receptor 12 Synonyms: GPCR12,GPCR21,MGC138349,MGC138351
Gene ID:	2835
NCBI Accession:	NM_005288

Application Details

Application Notes:	Optimal working dilution should be determined by the investigator.
Comment:	Preparation method: in vitro, wheat germ expression system Product Quality tested by: 12.5% SDS-PAGE Stained with Coomassie Blue.
Restrictions:	For Research Use only

Handling

Buffer:	50 mM Tris-HCl, 10 mM reduced Glutathione, pH =8.0 in the elution buffer.
Handling Advice:	Aliquot to avoid repeated freezing and thawing.
Storage:	-80 °C
Storage Comment:	Best use within three months from the date of receipt of this protein.

Images

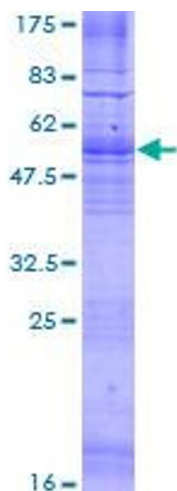


Image 1.