

Datasheet for ABIN135558

Mouse anti-Chicken IgA Antibody (FITC)[Go to Product page](#)**1** Image

Overview

Quantity:	0.5 mg
Target:	IgA
Reactivity:	Chicken
Host:	Mouse
Clonality:	Monoclonal
Conjugate:	FITC
Application:	ELISA, Immunohistochemistry (IHC), Flow Cytometry (FACS)

Product Details

Clone:	A-1
Isotype:	IgG1
Purification:	Protein A affinity column

Target Details

Target:	IgA
Abstract:	IgA Products
Target Type:	Antibody

Application Details

Application Notes:	Working Dilution:
--------------------	-------------------

Application Details

FACS: 1 µg/10⁶ cells
Representative data are included in this product insert.

Each laboratory should determine an optimum working titer for use in its particular application. Other applications have not been tested but use in such assays should not necessarily be excluded.

Comment: Excitation/Emission wavelength: 494 nm/514 nm

Restrictions: For Research Use only

Handling

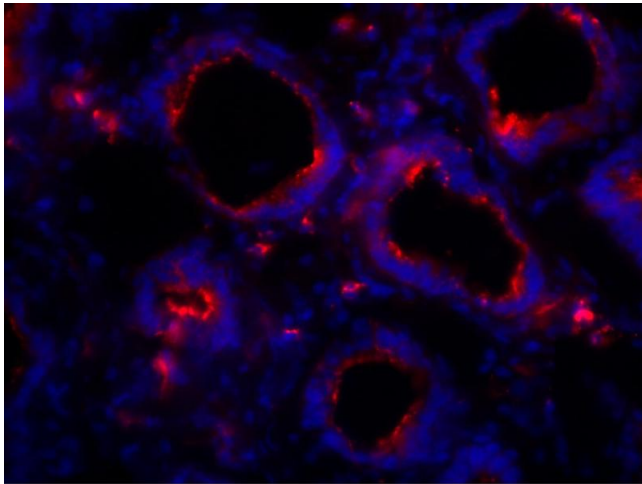
Buffer: 0.5 mg in 1.0 mL of PBS / NaN₃.

Preservative: Sodium azide

Precaution of Use: **WARNING:** Reagents contain sodium azide. Sodium azide is very toxic if ingested or inhaled. Avoid contact with skin, eyes, or clothing. Wear eye or face protection when handling. If skin or eye contact occurs, wash with copious amounts of water. If ingested or inhaled, contact a physician immediately. Sodium azide yields toxic hydrazoic acid under acidic conditions. Dilute azide-containing compounds in running water before discarding to avoid accumulation of potentially explosive deposits in lead or copper plumbing.

Handling Advice: Dilute only prior to immediate use
Protect conjugated products from light.
Each reagent is stable for the period shown on the bottle label if stored as directed.

Storage: 4 °C



Immunofluorescence

Image 1. Frozen chicken intestine tissue section was stained with Mouse Anti-Chicken IgA-BIOT and DAPI.