



[Go to Product page](#)

Datasheet for ABIN1355593

GPR172B Protein (AA 1-448) (GST tag)

1 Image

Overview

Quantity:	10 µg
Target:	GPR172B
Protein Characteristics:	AA 1-448
Origin:	Human
Source:	Wheat germ
Protein Type:	Recombinant
Purification tag / Conjugate:	This GPR172B protein is labelled with GST tag.
Application:	ELISA, Western Blotting (WB), Affinity Purification (AP), Antibody Array (AA)

Product Details

Purpose:	GPR172B (Human) Recombinant Protein (P01)
Sequence:	MAAPTLGRLV LTHLLVALFG MGSWAAVNGI WVLPVVVKD LPEGWSLPSY LSVVVALGNL GLLVTLWRR LAPGKGEQVP IQVVQVLSVV GTALLAPLWH HVAPVAGQLH SVAFLTLALV LAMACCTSNV TFLPFLSHLP PPFLRSFFLG QGLSALLPCV LALVQGVGRL ECPPAPTNGT SGPPLDFPER FPASTFFWAL TALLVTSAAA FRGLLLLLPS LPSVTTGGSG PELQLGSPGA EEEEKEEEEE LPLQEPPSQA AGTIPGPDPE VHQLFSAHGA FLLGLMAFTS AVTNGVLPVS QSFSCLPYGR LAYHLAVVLG SAANPLACFL AMGVLCRSLA GLVGLSLLGM LFGAYLMALA ILSPCPPLVG TTAGVVLWV SWVLCLCVFS YVKVAASSLL HGGGRPALLA AGVAIQVGS LGAGAMFPPT SIYHVFQSRK DCVDPCGP
Characteristics:	Human GPR172B full-length ORF (NP_060456.2, 1 a.a. - 448 a.a.) recombinant protein with GST-tag at N-terminal.

Product Details

Purification: in vitro wheat germ expression system

Target Details

Target: GPR172B

Alternative Name: GPR172B ([GPR172B Products](#))

Background: Full Gene Name: G protein-coupled receptor 172B
Synonyms: FLJ10060,GPCR,GPCR42,PAR2,RFT1

Gene ID: 55065

NCBI Accession: [NM_017986](#)

Application Details

Application Notes: Optimal working dilution should be determined by the investigator.

Comment: Preparation method: in vitro, wheat germ expression system
Product Quality tested by: 12.5% SDS-PAGE Stained with Coomassie Blue.

Restrictions: For Research Use only

Handling

Buffer: 50 mM Tris-HCl, 10 mM reduced Glutathione, pH =8.0 in the elution buffer.

Handling Advice: Aliquot to avoid repeated freezing and thawing.

Storage: -80 °C

Storage Comment: Best use within three months from the date of receipt of this protein.

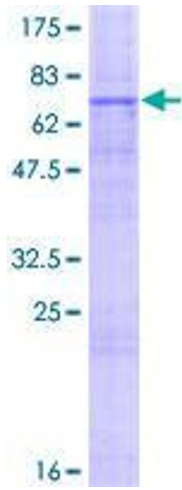


Image 1.