



[Go to Product page](#)

Datasheet for ABIN1355617

GPR37L1 Protein (AA 27-130) (GST tag)

1 Image

Overview

Quantity:	10 µg
Target:	GPR37L1
Protein Characteristics:	AA 27-130
Origin:	Human
Source:	Wheat germ
Protein Type:	Recombinant
Purification tag / Conjugate:	This GPR37L1 protein is labelled with GST tag.
Application:	ELISA, Western Blotting (WB), Affinity Purification (AP), Antibody Array (AA)

Product Details

Purpose:	GPR37L1 (Human) Recombinant Protein (Q01)
Sequence:	PLHLGRHRAE TQEQSRSKR GTEDEEAKGV QQYVPEEWAE YPRPIHPAGL QPTKPLVATS PNPDKDGGTP DSGQELRGNL TGAPGQRLQI QNPLYPVTES SYSA
Characteristics:	Human GPR37L1 partial ORF (NP_004758, 27 a.a. - 130 a.a.) recombinant protein with GST-tag at N-terminal.
Purification:	in vitro wheat germ expression system

Target Details

Target:	GPR37L1
Alternative Name:	GPR37L1 (GPR37L1 Products)

Target Details

Background:	Full Gene Name: G protein-coupled receptor 37 like 1 Synonyms: ET(B)R-LP-2,ETBR-LP-2
Gene ID:	9283
NCBI Accession:	NM_004767

Application Details

Application Notes:	Optimal working dilution should be determined by the investigator.
Comment:	Preparation method: in vitro, wheat germ expression system Product Quality tested by: 12.5% SDS-PAGE Stained with Coomassie Blue.
Restrictions:	For Research Use only

Handling

Buffer:	50 mM Tris-HCl, 10 mM reduced Glutathione, pH =8.0 in the elution buffer.
Handling Advice:	Aliquot to avoid repeated freezing and thawing.
Storage:	-80 °C
Storage Comment:	Best use within three months from the date of receipt of this protein.

Images

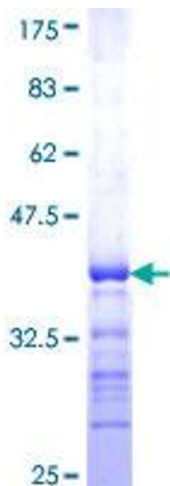


Image 1.