

Datasheet for ABIN135562

**Mouse anti-Chicken lambda Antibody (Biotin)**[Go to Product page](#)**1** Image

## Overview

Quantity:	0.5 mg
Target:	lambda
Reactivity:	Chicken
Host:	Mouse
Clonality:	Monoclonal
Conjugate:	Biotin
Application:	Flow Cytometry (FACS)

## Product Details

Immunogen:	Affinity purified chicken Ig or isolated lymphocytes
Clone:	L-1
Isotype:	IgG1
Specificity:	Chicken Lambda, Mr 28 kDa
Characteristics:	Mouse Anti-Chicken Lambda-BIOT

## Target Details

Target:	lambda
---------	--------

## Application Details

Application Notes:	• <b>Applications:</b> FC - Quality tested , IHC-FS - Reported in literature , ICC - Reported in literature ,
--------------------	---

Application Details

IP - Reported in literature , WB - Reported in literature

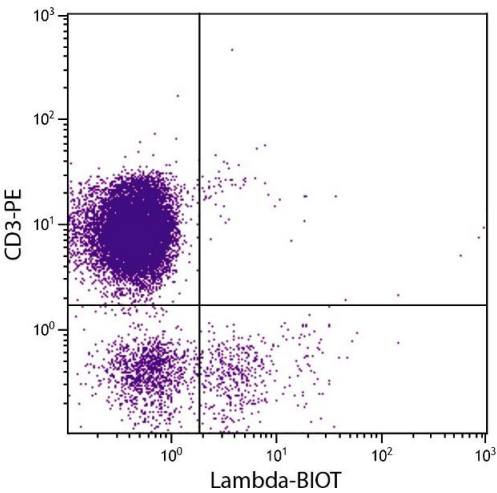
- **Working Dilutions:** Flow Cytometry FITC, BIOT, and PE conjugates 1 g/106 cells For flow cytometry, the suggested use of these reagents is in a final volume of 100 L

Sample Volume:	1 mL
Restrictions:	For Research Use only

Handling

Concentration:	0.5 mg/mL
Buffer:	0.5 mg in 1.0 mL of PBS/Sodium azide
Preservative:	Sodium azide
Precaution of Use:	This product contains Sodium azide: a POISONOUS AND HAZARDOUS SUBSTANCE which should be handled by trained staff only.
Handling Advice:	<b>Protect conjugated products from light.</b> Each reagent is stable for the period shown on the bottle label if stored as directed.
Storage:	4 °C
Storage Comment:	Store at 2-8°C

Images



**Flow Cytometry**

**Image 1.** Chicken peripheral blood lymphocytes were stained with Mouse Anti-Chicken Lambda-BIOT.