



[Go to Product page](#)

Datasheet for ABIN1355620

GPR4 Protein (AA 1-362) (GST tag)

1 Image

Overview

Quantity:	10 µg
Target:	GPR4
Protein Characteristics:	AA 1-362
Origin:	Human
Source:	Wheat germ
Protein Type:	Recombinant
Purification tag / Conjugate:	This GPR4 protein is labelled with GST tag.
Application:	ELISA, Western Blotting (WB), Affinity Purification (AP), Antibody Array (AA)

Product Details

Purpose:	GPR4 (Human) Recombinant Protein (P01)
Sequence:	MGNHTWEGCH VDSRVDHLFP PSLYIFVIGV GLPTNCLALW AAYRQVQQRN ELGVYLMNLS IADLLYICTL PLWVDYFLHH DNWIHGPGSC KLFGFIFYTN IYISIAFLCC ISVDRYLAVA HPLRFARLRR VKTAVAVSSV VWATELGANS APLFHDELFR DRYNHTFCFE KFPMEGWVAW MNLRYRVFVGF LFPWALMLLS YRGILRAVRG SVSTERQEKA KIKRLALSLI AIVLVCFAPY HVLLLSRSAI YLGRPWCDFG EERVFSAYHS SLAFTSLNCV ADPILYCLVN EGARSDVAKA LHNLLRFLAS DKPQEMANAS LTLETPLTSK RNSTAKAMTG SWAATPPSQG DQVQLKMLPP AQ
Characteristics:	Human GPR4 full-length ORF (NP_005273.1, 1 a.a. - 362 a.a.) recombinant protein with GST-tag at N-terminal.
Purification:	in vitro wheat germ expression system

Target Details

Target:	GPR4
Alternative Name:	GPR4 (GPR4 Products)
Background:	Full Gene Name: G protein-coupled receptor 4 Synonyms:
Gene ID:	2828
NCBI Accession:	NM_005282

Application Details

Application Notes:	Optimal working dilution should be determined by the investigator.
Comment:	Preparation method: in vitro, wheat germ expression system Product Quality tested by: 12.5% SDS-PAGE Stained with Coomassie Blue.
Restrictions:	For Research Use only

Handling

Buffer:	50 mM Tris-HCl, 10 mM reduced Glutathione, pH =8.0 in the elution buffer.
Handling Advice:	Aliquot to avoid repeated freezing and thawing.
Storage:	-80 °C
Storage Comment:	Best use within three months from the date of receipt of this protein.

Images

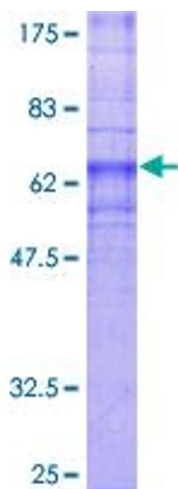


Image 1.