



[Go to Product page](#)

Datasheet for ABIN1355623

GPR45 Protein (AA 1-372) (GST tag)

1 Image

Overview

Quantity:	25 µg
Target:	GPR45
Protein Characteristics:	AA 1-372
Origin:	Human
Source:	Wheat germ
Protein Type:	Recombinant
Purification tag / Conjugate:	This GPR45 protein is labelled with GST tag.
Application:	ELISA, Western Blotting (WB), Affinity Purification (AP), Antibody Array (AA)

Product Details

Purpose:	GPR45 (Human) Recombinant Protein (P01)
Sequence:	MACNSTSLEA YTYLLLNTSN ASDSGSTQLP APLRISLAIV MLLMTVVGFL GNTVVCIIVY QRPAMRSAIN LLLATLAFSD IMLSLCCMPF TAVTLITVRW HFGDHFCLRS ATLYWFFVLE GVAILLIISV DRFLIIVQRQ DKLNPRAKV IIAVSWVLSF CIAGPSLTGW TLVEVPARAP QCVLGYTELP ADRAYVVTLV VAVFFAPFGV MLCAYMCILN TVRKNVVRVH NQSDSLDLRQ LTRAGLRLRQ RQQQVSDLS FKTKAFTTIL ILFVGFSLCW LPHSVYSLLS VFSQRFYCGS SFYATSTCVL WLSYLKSVFN PIVYCWRIKK FREACIELLP QTFQILPKVP ERIRRRIQPS TVYVCNENQS AV
Characteristics:	Human GPR45 full-length ORF (NP_009158.3, 1 a.a. - 372 a.a.) recombinant protein with GST-tag at N-terminal.
Purification:	in vitro wheat germ expression system

Target Details

Target:	GPR45
Alternative Name:	GPR45 (GPR45 Products)
Background:	Full Gene Name: G protein-coupled receptor 45 Synonyms: PSP24,PSP24(ALPHA),PSP24A
Gene ID:	11250
NCBI Accession:	NM_007227

Application Details

Application Notes:	Optimal working dilution should be determined by the investigator.
Comment:	Preparation method: in vitro, wheat germ expression system Product Quality tested by: 12.5% SDS-PAGE Stained with Coomassie Blue.
Restrictions:	For Research Use only

Handling

Buffer:	50 mM Tris-HCl, 10 mM reduced Glutathione, pH =8.0 in the elution buffer.
Handling Advice:	Aliquot to avoid repeated freezing and thawing.
Storage:	-80 °C
Storage Comment:	Best use within three months from the date of receipt of this protein.

Images

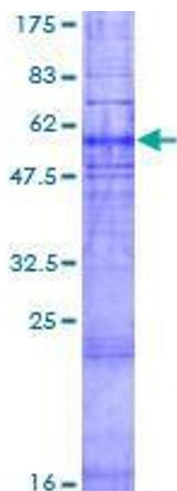


Image 1.