



[Go to Product page](#)

Datasheet for ABIN135563
anti-MHC, Class I antibody

1 Image

Overview

Quantity:	0.5 mg
Target:	MHC, Class I
Reactivity:	Chicken
Host:	Mouse
Clonality:	Monoclonal
Conjugate:	This MHC, Class I antibody is un-conjugated
Application:	Flow Cytometry (FACS), Immunohistochemistry (IHC), Western Blotting (WB), Immunoprecipitation (IP)

Product Details

Immunogen:	Unknown
Clone:	F21-2
Isotype:	IgG1
Specificity:	Chicken/Turkey MHC Class I α -chain, Mr 40-43 kDa
Characteristics:	Mouse Anti-Chicken MHC Class I-UNLB
Purification:	Purified

Target Details

Target:	MHC, Class I
Alternative Name:	MHC Class I (MHC, Class I Products)

Application Details

Comment: Immunoaffinity chromatography

Sample Volume: 1 mL

Restrictions: For Research Use only

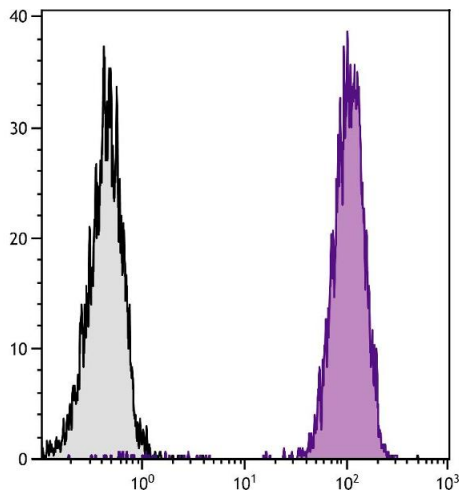
Handling

Buffer: Product is supplied as 0.5 mg of purified immunoglobulin in 1.0 mL of 100 mM borate buffered saline, pH 8.0.

Handling Advice: Each reagent is stable for the period shown on the bottle label if stored as directed.

Storage: 4 °C

Images



Flow Cytometry

Image 1. Chicken peripheral blood lymphocytes were stained with Mouse Anti-Chicken MHC Class I-UNLB.