



Datasheet for ABIN1355637

G Protein-Coupled Receptor 89B (GPR89B) (AA 175-284) protein (GST tag)



[Go to Product page](#)

1 Image

Overview

Quantity:	10 µg
Target:	G Protein-Coupled Receptor 89B (GPR89B)
Protein Characteristics:	AA 175-284
Origin:	Human
Source:	Wheat germ
Protein Type:	Recombinant
Purification tag / Conjugate:	GST tag
Application:	ELISA, Western Blotting (WB), Affinity Purification (AP), Antibody Array (AA)

Product Details

Purpose:	GPR89 (Human) Recombinant Protein (Q01)
Sequence:	SYFLRNVTDT DILALERRLL QTMDMIISKK KRMAMARRTM FQKGEVHNKP SGFWGMIKSV TTSASGSENL TLIQQEVDAL EELSRQLFLE TADLYATKER IEYSKTFK GK
Characteristics:	Human GPR89 partial ORF (AAH03187, 175 a.a. - 284 a.a.) recombinant protein with GST-tag at N-terminal.
Purification:	in vitro wheat germ expression system

Target Details

Target:	G Protein-Coupled Receptor 89B (GPR89B)
Alternative Name:	GPR89B (GPR89B Products)

Target Details

Background: Full Gene Name: G protein-coupled receptor 89B
Synonyms: GPHR,GPR89,SH120

Gene ID: 51463

Application Details

Application Notes: Optimal working dilution should be determined by the investigator.

Comment: Preparation method: in vitro, wheat germ expression system
Product Quality tested by: 12.5% SDS-PAGE Stained with Coomassie Blue.

Restrictions: For Research Use only

Handling

Buffer: 50 mM Tris-HCl, 10 mM reduced Glutathione, pH =8.0 in the elution buffer.

Handling Advice: Aliquot to avoid repeated freezing and thawing.

Storage: -80 °C

Storage Comment: Best use within three months from the date of receipt of this protein.

Images

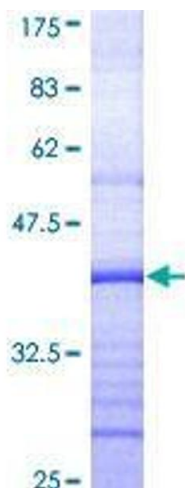


Image 1.